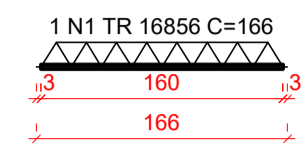
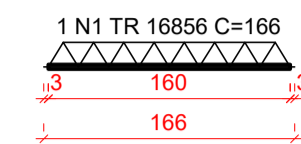


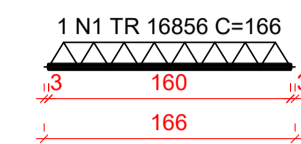
VT1a (14 unidades)
(L1)
ESC 1:50



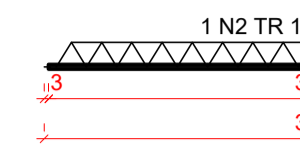
VT2a (15 unidades)
(L2)
ESC 1:50



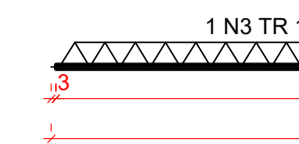
VT3a (4 unidades)
(L3)
ESC 1:50



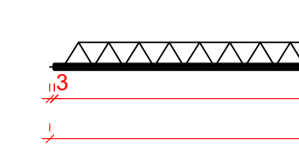
VT4a (14 unidades)
(L4)
ESC 1:50



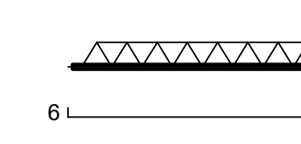
VT4b (1 unidades)
(L4)
ESC 1:50



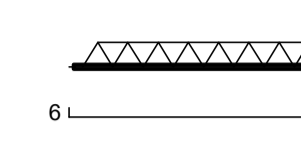
VT5a (4 unidades)
(L5)
ESC 1:50



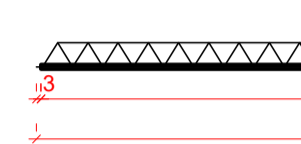
VT5b (8 unidades)
(L5)
ESC 1:50



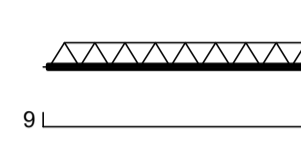
VT5c (20 unidades)
(L5)
ESC 1:50



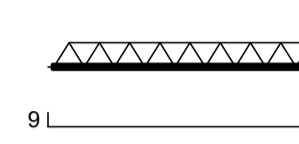
VT6a (4 unidades)
(L6)
ESC 1:50



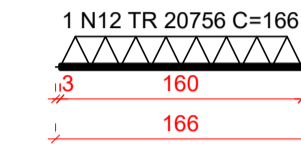
VT6b (20 unidades)
(L6)
ESC 1:50



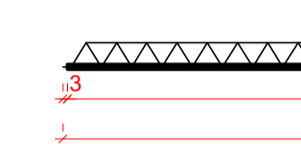
VT6c (8 unidades)
(L6)
ESC 1:50



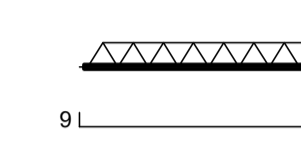
VT7a (32 unidades)
(L7)
ESC 1:50



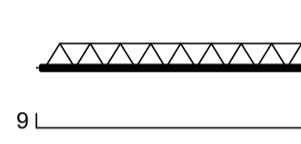
VT8a (4 unidades)
(L8)
ESC 1:50



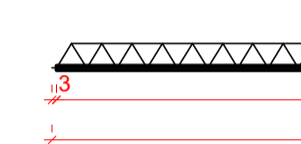
VT8b (14 unidades)
(L8)
ESC 1:50



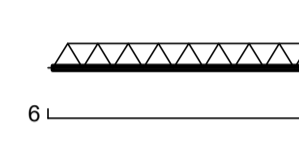
VT8c (6 unidades)
(L9)
ESC 1:50



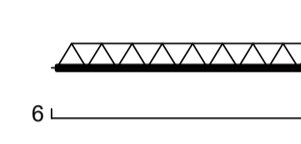
VT9a (6 unidades)
(L9)
ESC 1:50



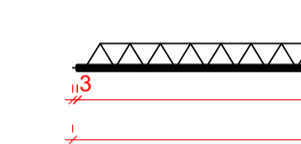
VT9b (10 unidades)
(L9)
ESC 1:50



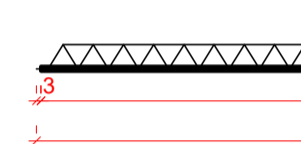
VT9c (16 unidades)
(L9)
ESC 1:50



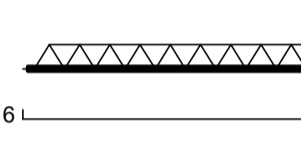
VT10a (32 unidades)
(L10)
ESC 1:50



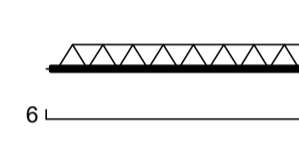
VT11a (8 unidades)
(L11)
ESC 1:50



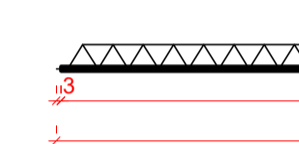
VT11b (8 unidades)
(L11)
ESC 1:50



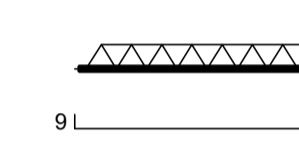
VT11c (16 unidades)
(L11)
ESC 1:50



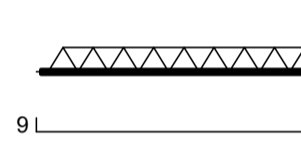
VT12a (4 unidades)
(L12)
ESC 1:50



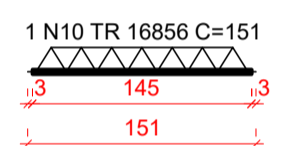
VT12b (24 unidades)
(L12)
ESC 1:50



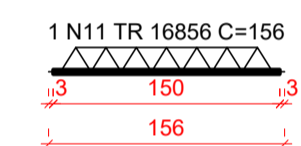
VT12c (4 unidades)
(L12)
ESC 1:50



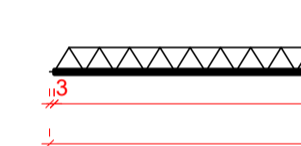
VT13a (2 unidades)
(L13)
ESC 1:50



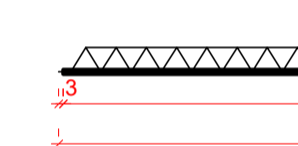
VT13b (20 unidades)
(L13)
ESC 1:50



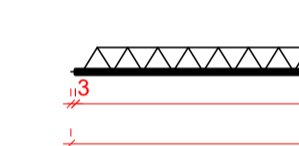
VT14a (4 unidades)
(L14)
ESC 1:50



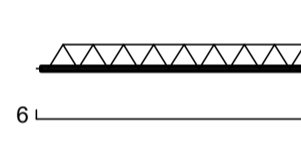
VT15a (4 unidades)
(L15)
ESC 1:50



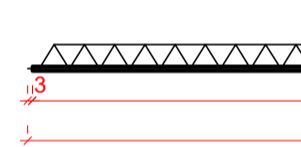
VT16a (4 unidades)
(L16)
ESC 1:50



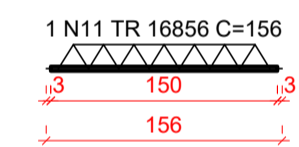
VT17a (1 unidades)
(L17)
ESC 1:50



VT17b (3 unidades)
(L17)
ESC 1:50



VT18a (4 unidades)
(L18)
ESC 1:50



RELAÇÃO DO AÇO

14xVT1a	15xVT2a	4xVT3a
14xVT4a	VT4b	4xVT3a
8xVT5a	20xVT5c	4xVT3a
20xVT6b	8xVT6c	32xVT7a
4xVT8a	14xVT8b	6xVT8c
6xVT9a	16xVT9b	16xVT9c
32xVT10a	8xVT11a	8xVT11b
16xVT11c	4xVT12a	24xVT12b
4xVT12c	2xVT13a	20xVT13b
4xVT14a	4xVT15a	4xVT15b
VT17a	3xVT17b	4xVT18a

AÇO	N	DIAM (mm)	QUANT	C.UNIT (cm)	C.TOTAL (cm)
CA60	1	TR 16856	33	166	5478
	2	TR 16856	14	356	4984
	3	TR 16856	1	351	351
	4	TR 16856	32	598	19136
	5	TR 16856	32	608	19456
	6	TR 16856	24	611	14664
	7	TR 16856	36	606	21816
	8	TR 16856	36	616	22176
	9	TR 16856	72	595	42840
	10	TR 16856	2	151	302
	11	TR 16856	24	156	3744
CA50	12	TR 20756	32	166	5312
	13	5.0	48	607	29136
	14	5.0	42	615	25830
	15	5.0	41	604	24764
	16	8.0	36	622	22392
	17	8.0	26	625	16250
	18	8.0	32	608	19488

RESUMO DO AÇO

AÇO	DIAM (mm)	C.TOTAL (m)	PESO + 10% (kg)
CA50	8.0	581.3	252.3
CA60	5.0	797.3	135.2
TR 16856		1549.5	2447.5
TR 20756		53.1	67.6
PESO TOTAL (kg)			
CA50			252.3
CA60			2670.4

Volume de concreto (C-25) = 0.00 m³
Área de forma = 0.00 m²

APROVAÇÃO



PREFEITURA MUNICIPAL DE PALMAS
SECRETARIA MUNICIPAL DE SAÚDE
DIVISÃO DE PROJETOS E EXECUÇÃO DE OBRAS

PROJETO DE ESTRUTURA EM CONCRETO ARMADO

OBRA: CONSTRUÇÃO DA CENTRAL DA REDE DE FRIOS

ENDEREÇO: ARSE 22 (206 SUL), AL. 8 / 12, AI 9 B
PALMAS - TO

ÁREAS / TAXAS / ÍNDICES:
TERRENO 2.649,47 m²
CONSTRUÍDA 611,53 m²

ASSUNTO: VIGOTAS
VIGOTAS DAS LAJES

PROPRIETÁRIO: SECRETARIA MUNICIPAL DE SAÚDE DE PALMAS

AUTOR: ENG. ITANO ARRUDA NUNES NETO - CREA: 211275/D-TO

AUTOR: ENG. JHOONEY RAMALHO GOMES - CREA: 301133/D-TO

COLABORADOR: ARTHUR VIANA DE OLIVEIRA

PRANCHA: 17/21

REVISÃO: 0

ESCALA: INDICADA

ARQUIVO:

ESTA PLANTA
SOMENTE PODERÁ SER
UTILIZADA SE
PLOTADA COLORIDA

OS DIREITOS AUTORAIS
DESTE PROJETO
PERTENCEM AO AUTOR.
É PROIBIDA A SUA
REPRODUÇÃO,
MODIFICAÇÃO E/OU
ALTERAÇÃO. LEI.5194/66.