

RELAÇÃO DO AÇO

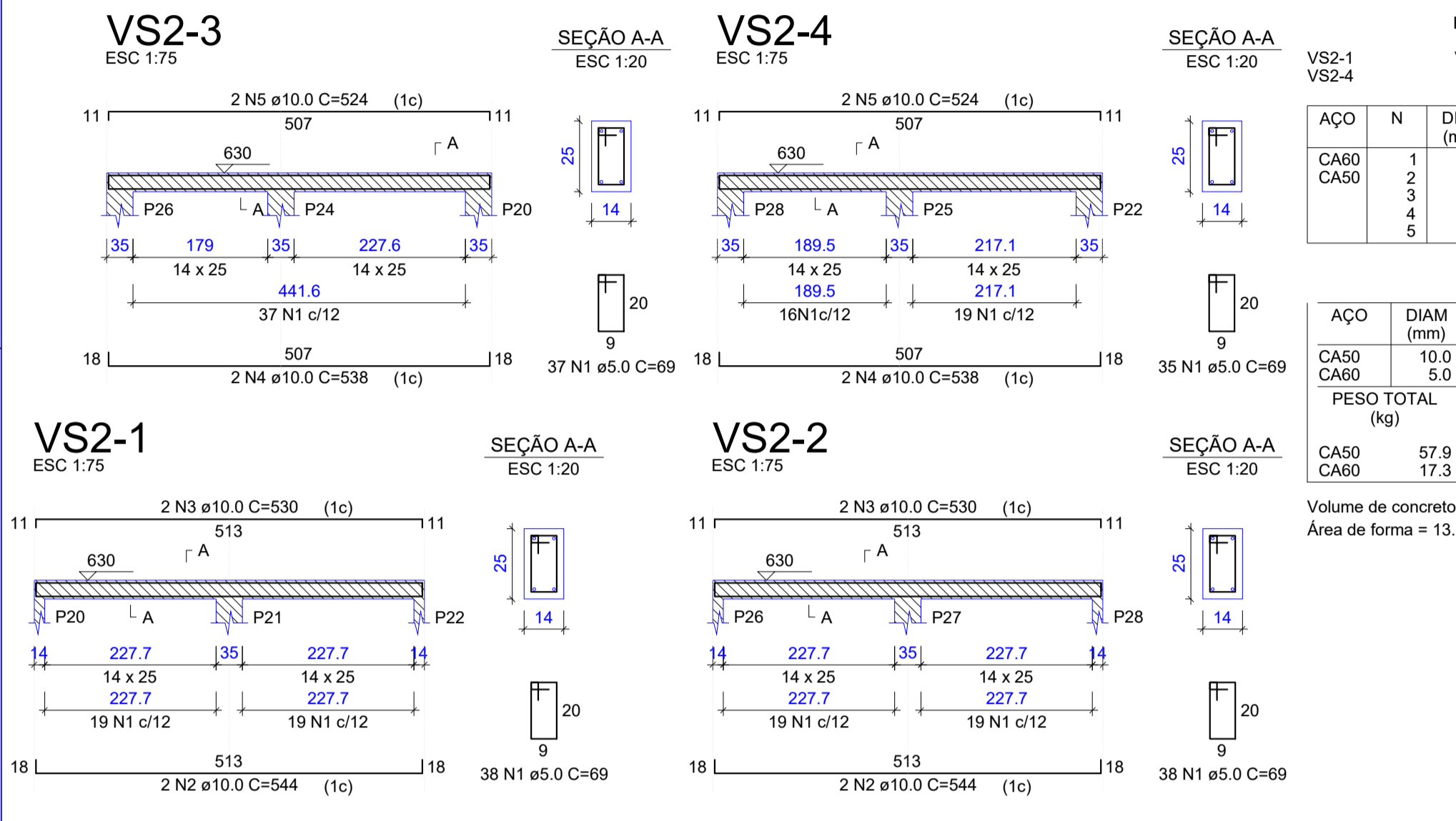
ACO	N	DIAM (mm)	QUANT	C.UNIT (cm)	C.TOTAL (cm)
CA50	1	5.0	244	24	5856
CA50	2	5.0	244	89	21716
CA50	3	10.0	24	147	3508
CA50	4	10.0	24	200	4800
CA50	5	10.0	24	380	9120
CA50	6	10.0	18	VAR	VAR
CA50	7	10.0	6	VAR	VAR

RESUMO DO AÇO

ACO	DIAM (mm)	C.TOTAL (m)	QUANT + 10% (Barras)	PESO + 10% (kg)
CA50	5.0	10.0	271.1	148.9
CA50	5.0	5.0	278.7	148.9
CA50	10.0	4	524	46.7
CA50	10.0	4	524	46.7

Volume de concreto (C-25) = 1.49 m³
Área de forma = 29.84 m²

Forma do pavimento PLATIBNDA CAIXA D'ÁGUA (Nível 630)
escala 1:50



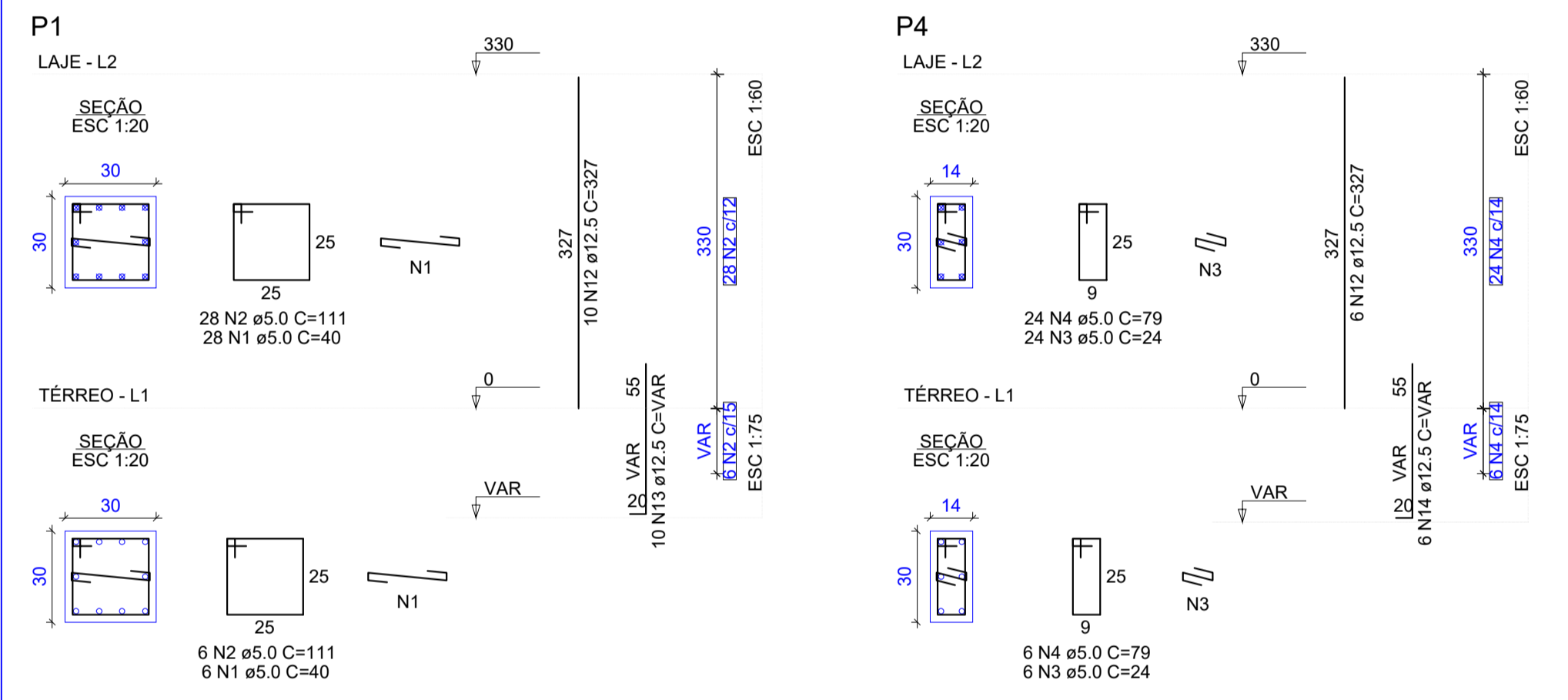
RELAÇÃO DO AÇO

ACO	N	DIAM (mm)	QUANT	C.UNIT (cm)	C.TOTAL (cm)
CA50	1	5.0	148	69	10212
CA50	2	5.0	148	544	2178
CA50	3	10.0	4	530	2120
CA50	4	10.0	4	538	2132
CA50	5	10.0	4	524	2096

RESUMO DO AÇO

ACO	DIAM (mm)	C.TOTAL (m)	QUANT + 10% (Barras)	PESO + 10% (kg)
CA50	5.0	10.0	164	87.4
CA50	5.0	5.0	164	87.4
CA50	10.0	4	524	46.7
CA50	10.0	4	524	46.7

Volume de concreto (C-30) = 0.72 m³
Área de forma = 13.18 m²



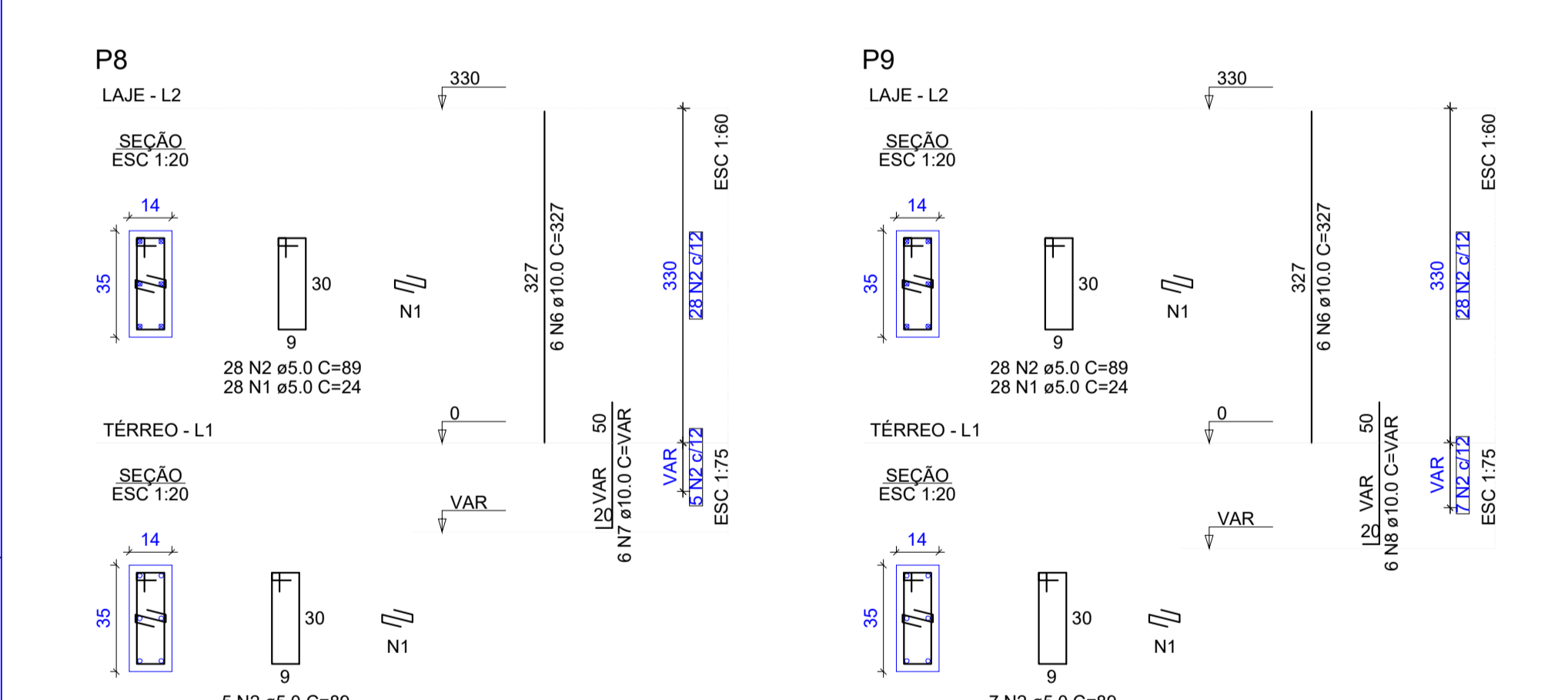
RELAÇÃO DO AÇO

ACO	N	DIAM (mm)	QUANT	C.UNIT (cm)	C.TOTAL (cm)
CA50	1	5.0	34	40	1360
CA50	2	5.0	34	111	3754
CA50	3	5.0	30	24	720
CA50	4	5.0	35	91	3185
CA50	5	5.0	33	34	1122
CA50	6	10.0	10	327	3270
CA50	7	10.0	6	VAR	VAR
CA50	8	10.0	6	VAR	VAR
CA50	9	10.0	6	VAR	VAR
CA50	10	12.5	16	337	5392
CA50	11	12.5	10	VAR	VAR
CA50	12	12.5	10	VAR	VAR
CA50	13	12.5	10	VAR	VAR
CA50	14	12.5	16	337	5392
CA50	15	16.0	6	379	1962
CA50	16	16.0	6	VAR	VAR

RESUMO DO AÇO

ACO	DIAM (mm)	C.TOTAL (m)	QUANT + 10% (Barras)	PESO + 10% (kg)
CA50	5.0	10.0	50.8	27.1
CA50	5.0	5.0	50.8	27.1
CA50	10.0	4	524	46.7
CA50	10.0	4	524	46.7

Volume de concreto (C-25) = 1.54 m³
Área de forma = 24.21 m²



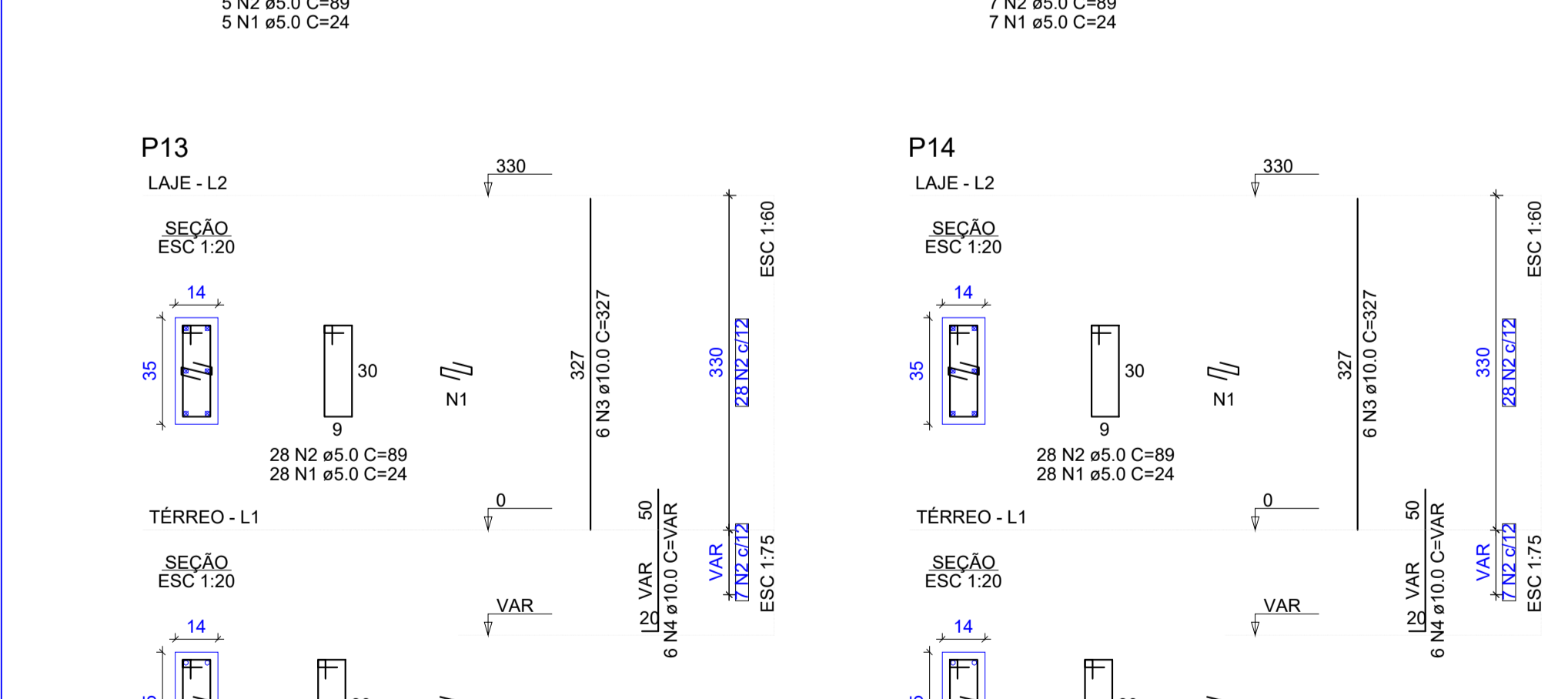
RELAÇÃO DO AÇO

ACO	N	DIAM (mm)	QUANT	C.UNIT (cm)	C.TOTAL (cm)
CA50	1	5.0	110	24	2640
CA50	2	5.0	110	89	9780
CA50	3	5.0	24	24	576
CA50	4	5.0	35	111	3885
CA50	5	5.0	33	40	1320
CA50	6	10.0	10	327	3270
CA50	7	10.0	6	VAR	VAR
CA50	8	10.0	6	VAR	VAR
CA50	9	10.0	6	VAR	VAR
CA50	10	12.5	16	337	5392
CA50	11	12.5	10	VAR	VAR
CA50	12	12.5	10	VAR	VAR
CA50	13	12.5	10	VAR	VAR
CA50	14	12.5	16	337	5392
CA50	15	16.0	6	379	1962
CA50	16	16.0	6	VAR	VAR

RESUMO DO AÇO

ACO	DIAM (mm)	C.TOTAL (m)	QUANT + 10% (Barras)	PESO + 10% (kg)
CA50	5.0	10.0	123.3	65.5
CA50	5.0	5.0	123.3	65.5
CA50	10.0	4	524	46.7
CA50	10.0	4	524	46.7

Volume de concreto (C-25) = 1.31 m³
Área de forma = 23.41 m²



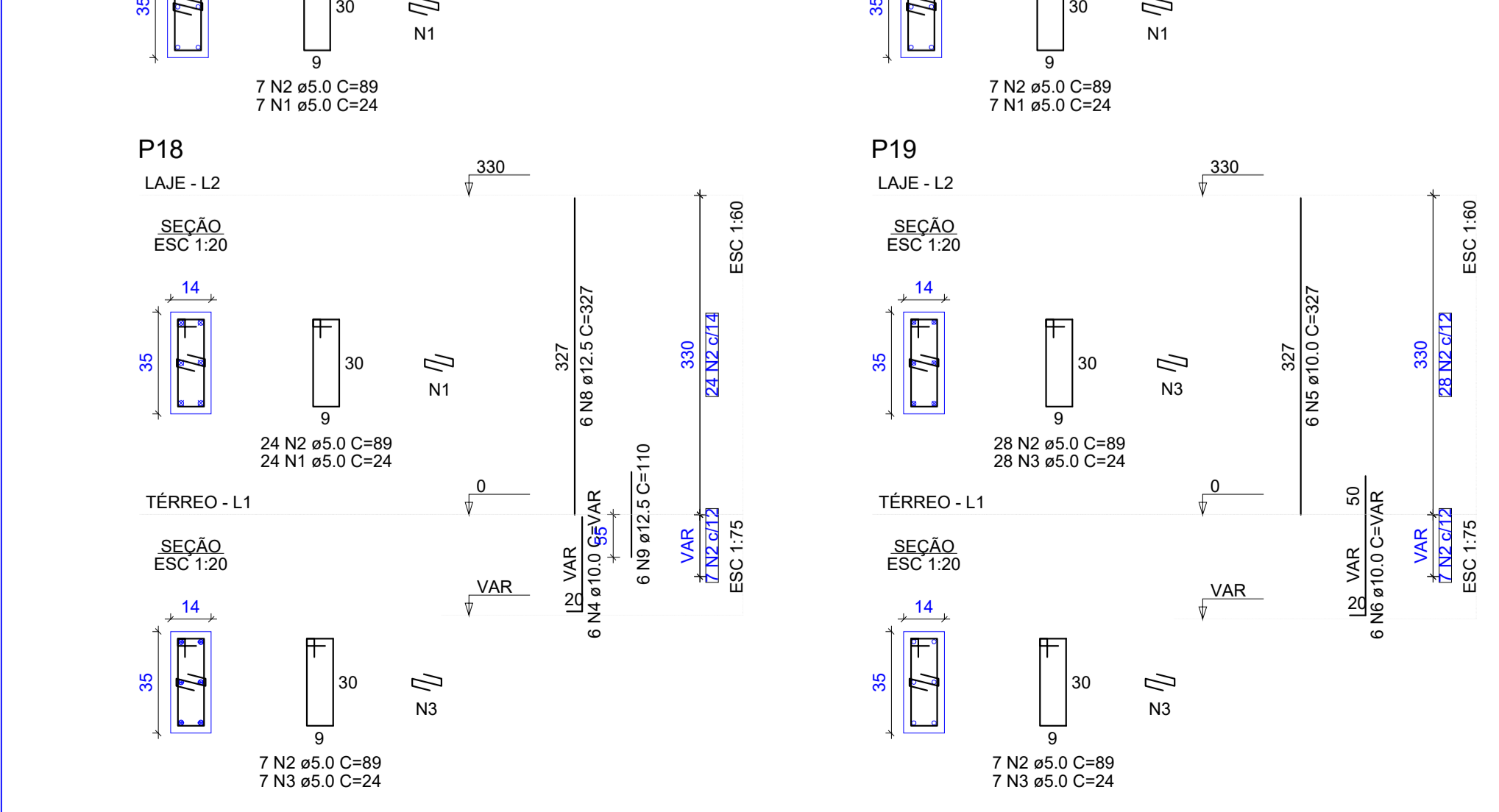
RELAÇÃO DO AÇO

ACO	N	DIAM (mm)	QUANT	C.UNIT (cm)	C.TOTAL (cm)
CA50	1	5.0	175	24	4200
CA50	2	5.0	175	89	15525
CA50	3	10.0	30	327	9810
CA50	4	10.0	24	VAR	VAR
CA50	5	10.0	6	VAR	VAR
CA50	6	10.0	6	VAR	VAR
CA50	7	10.0	6	VAR	VAR
CA50	8	10.0	6	VAR	VAR
CA50	9	10.0	6	VAR	VAR
CA50	10	12.5	16	337	5392
CA50	11	12.5	10	VAR	VAR
CA50	12	12.5	10	VAR	VAR
CA50	13	12.5	10	VAR	VAR
CA50	14	12.5	16	337	5392
CA50	15	16.0	6	379	1962
CA50	16	16.0	6	VAR	VAR

RESUMO DO AÇO

ACO	DIAM (mm)	C.TOTAL (m)	QUANT + 10% (Barras)	PESO + 10% (kg)
CA50	5.0	10.0	156.3	83.6
CA50	5.0	5.0	156.3	83.6
CA50	10.0	4	524	46.7
CA50	10.0	4	524	46.7

Volume de concreto (C-25) = 1.13 m³
Área de forma = 22.59 m²



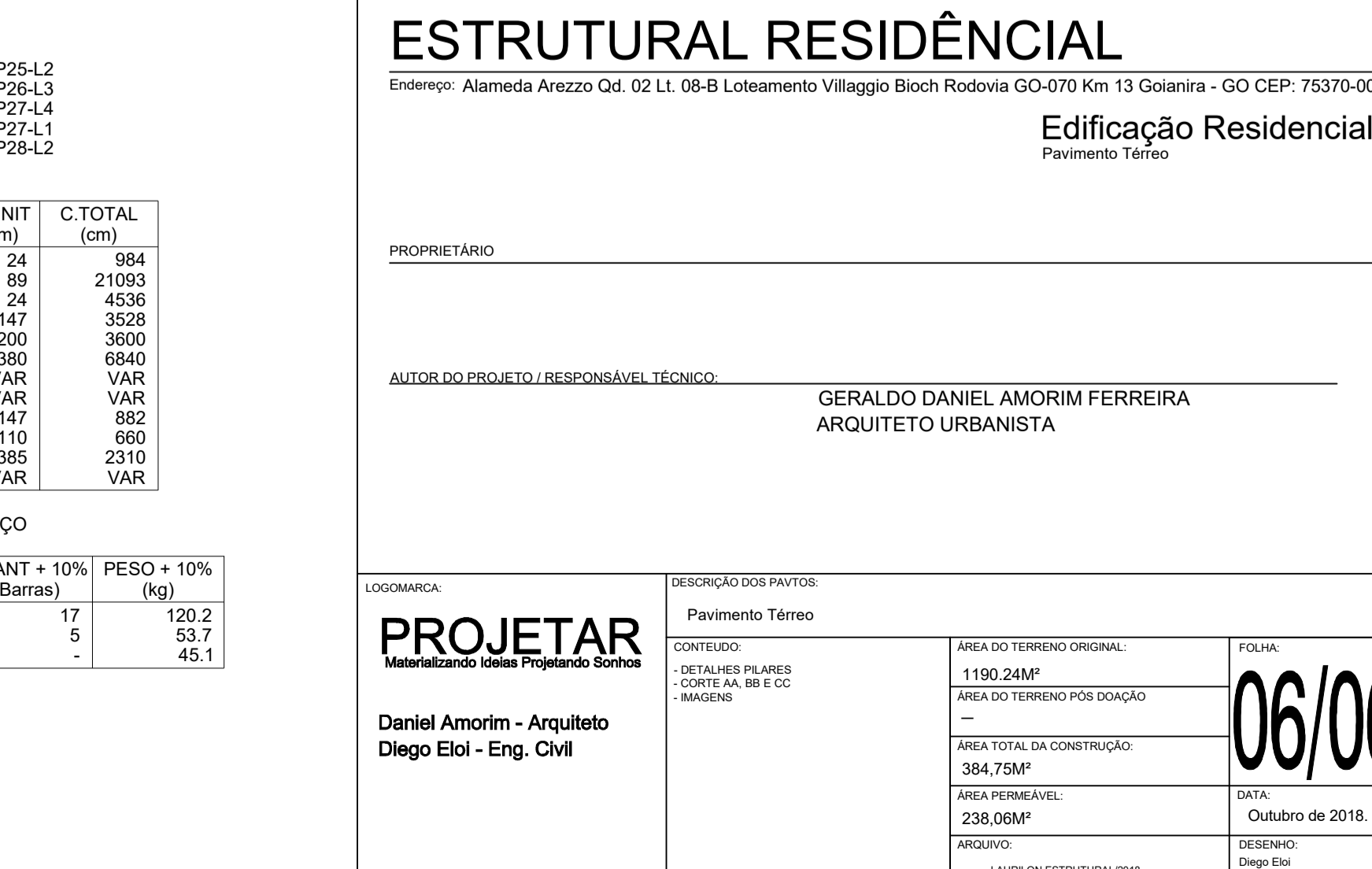
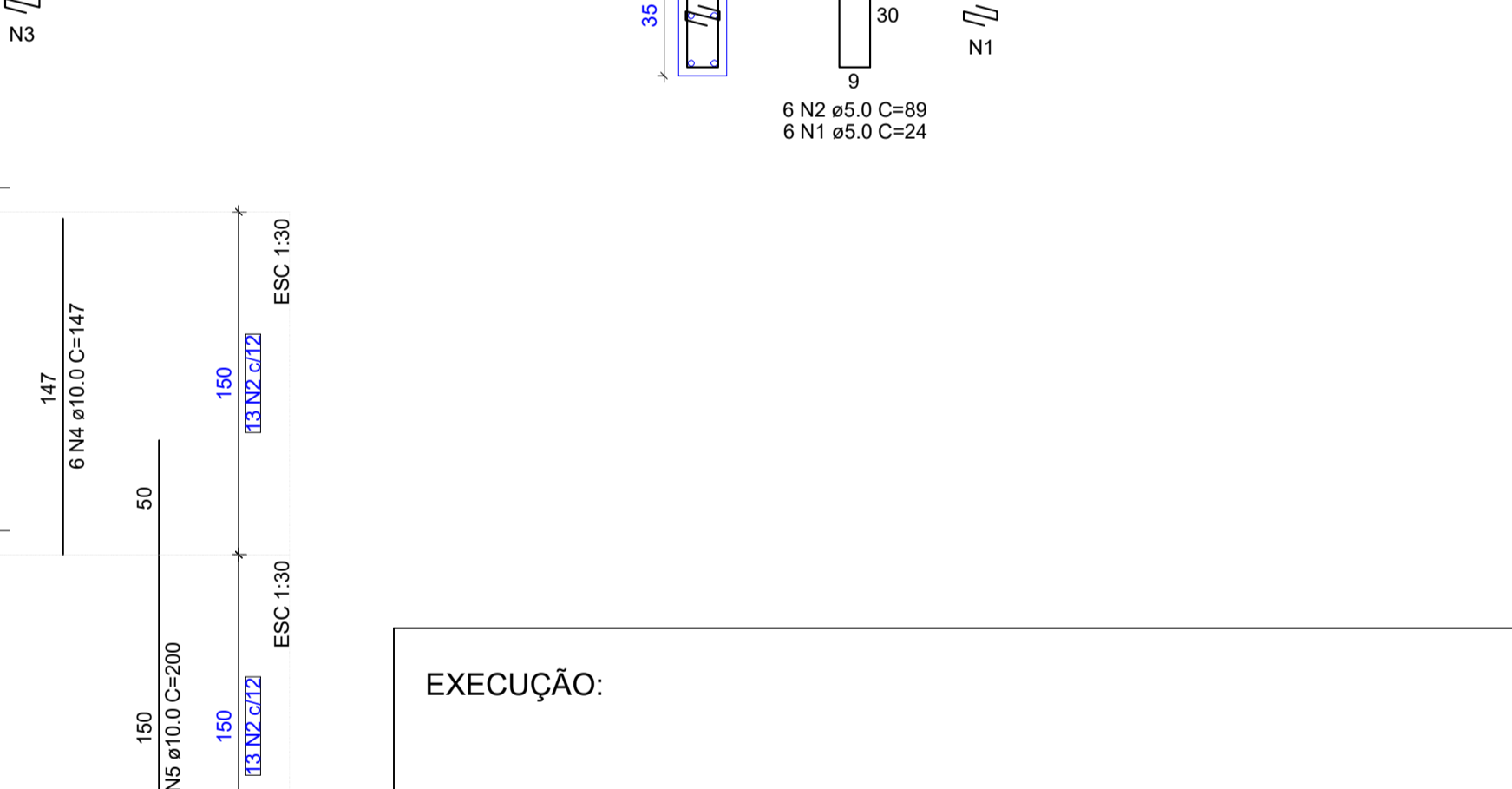
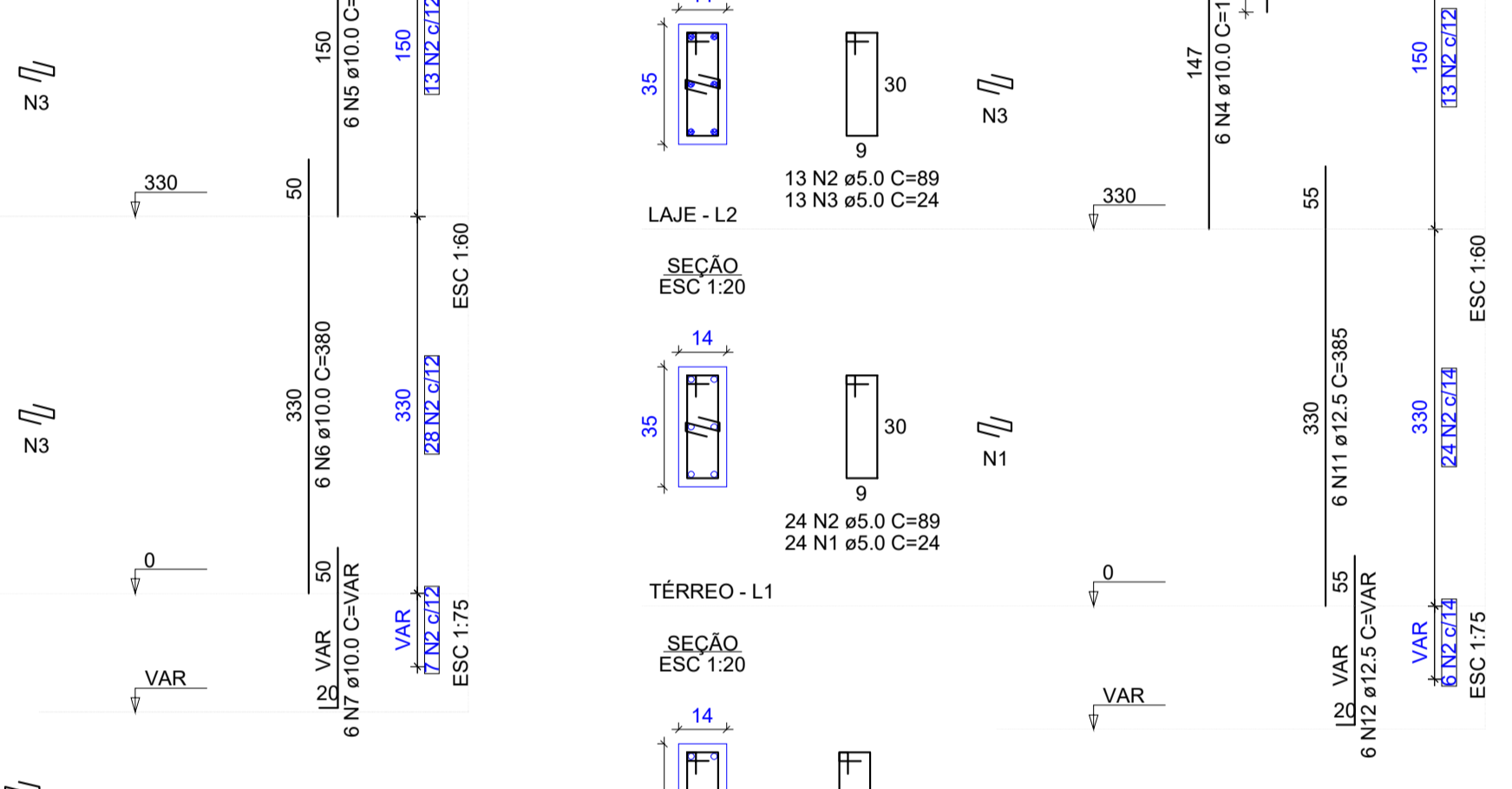
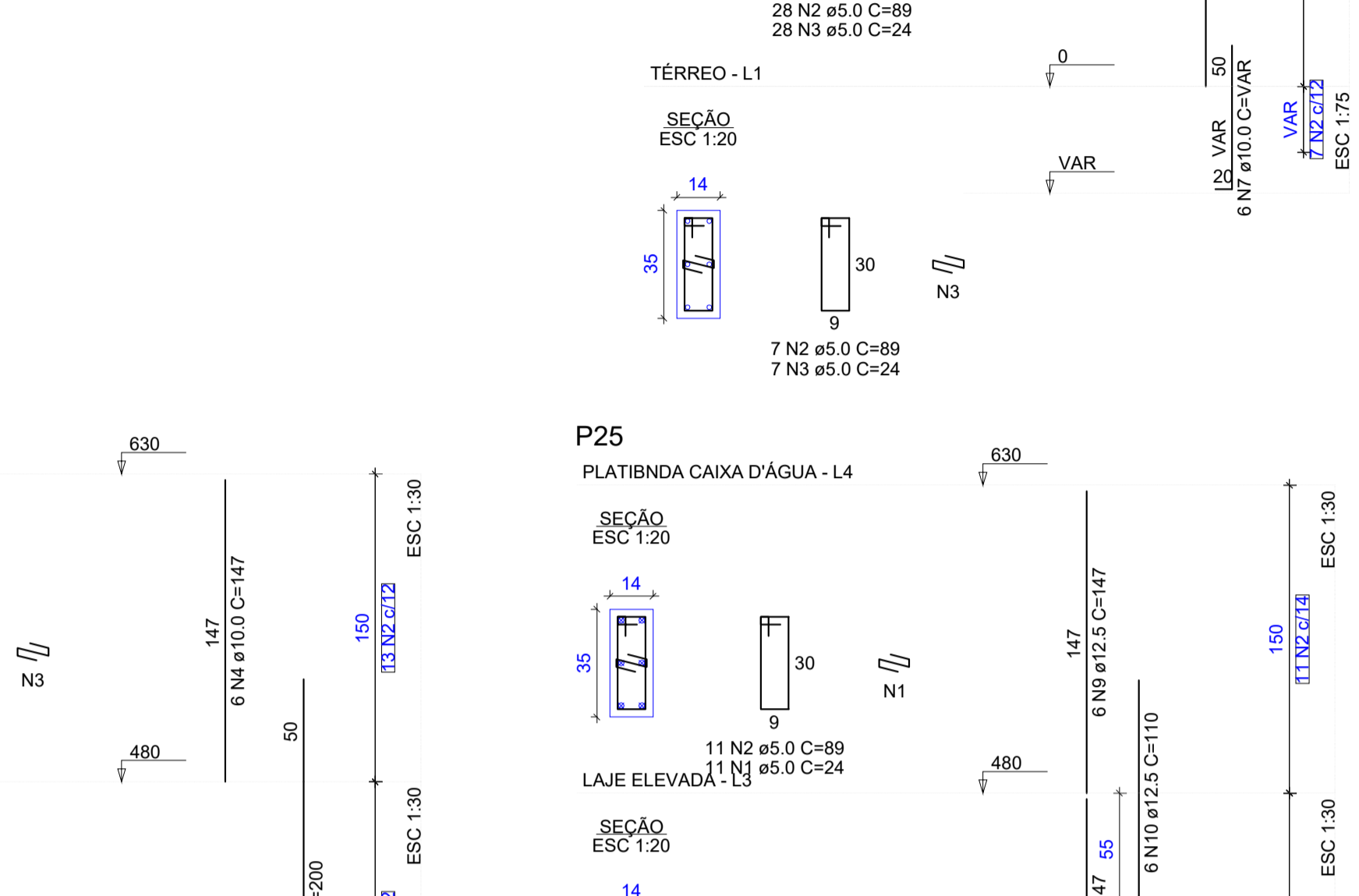
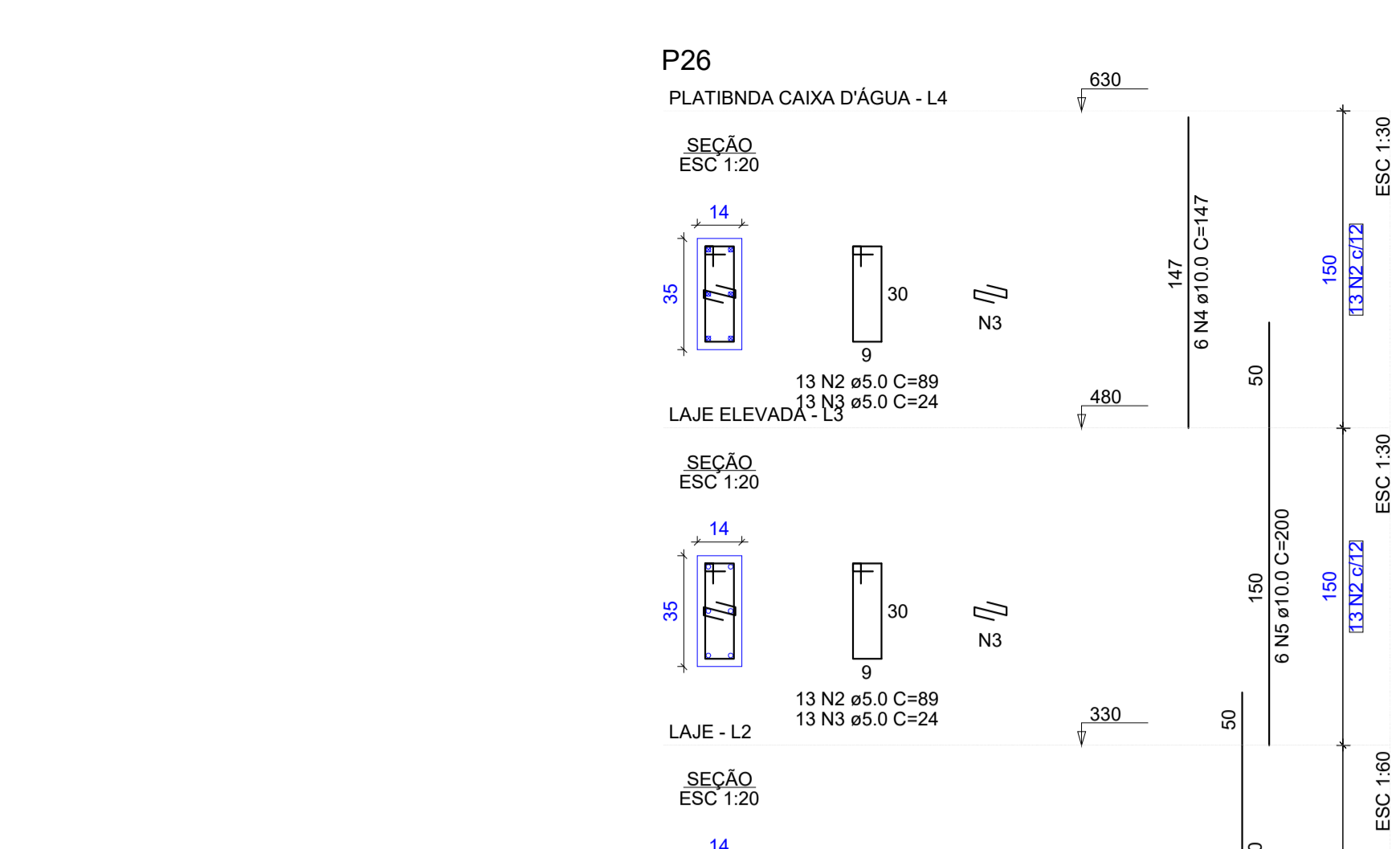
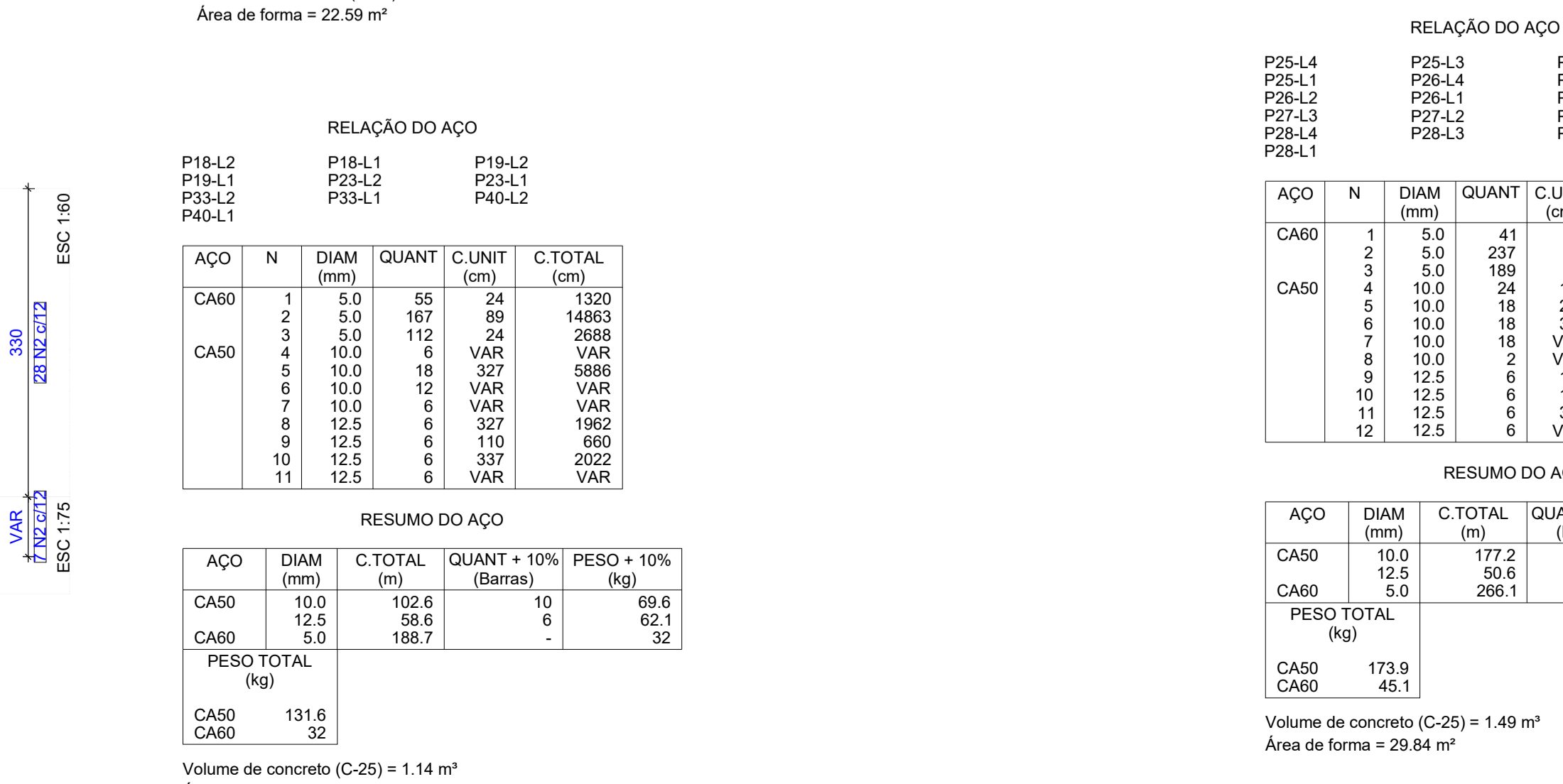
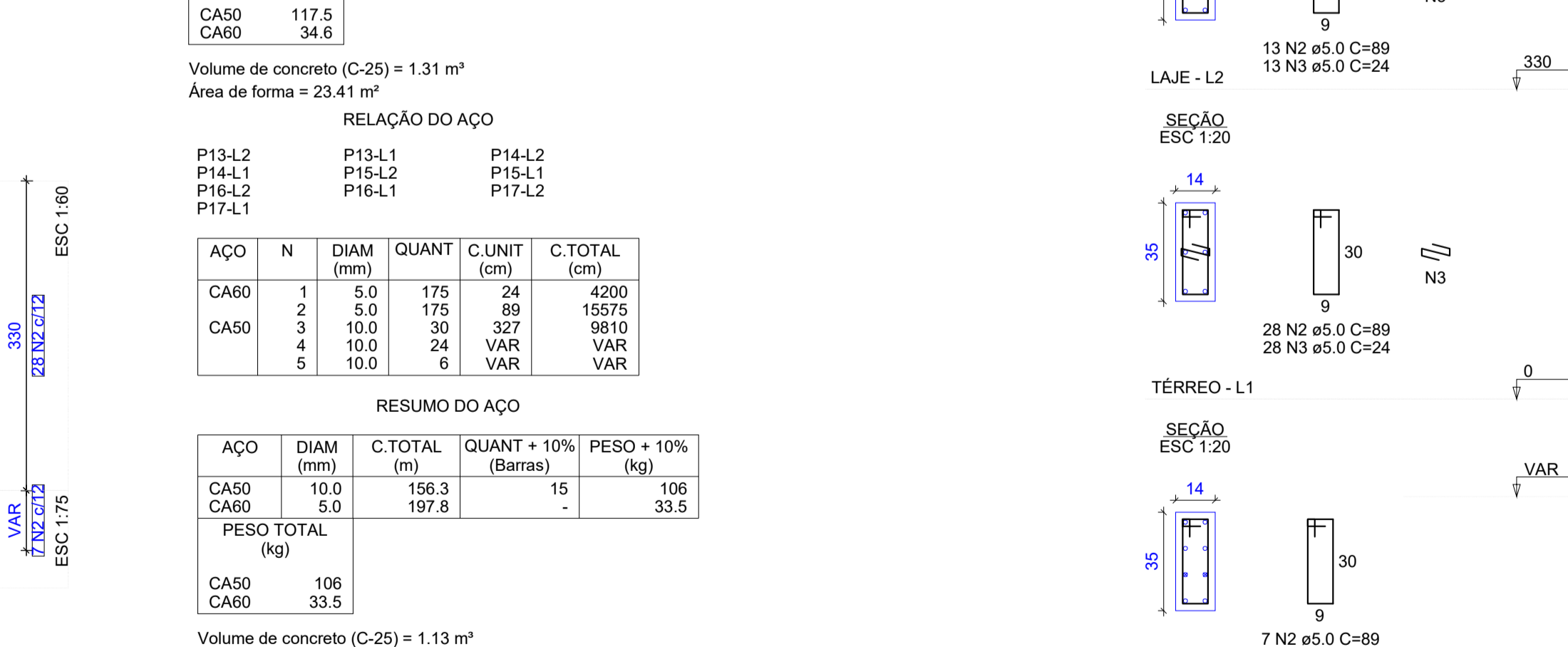
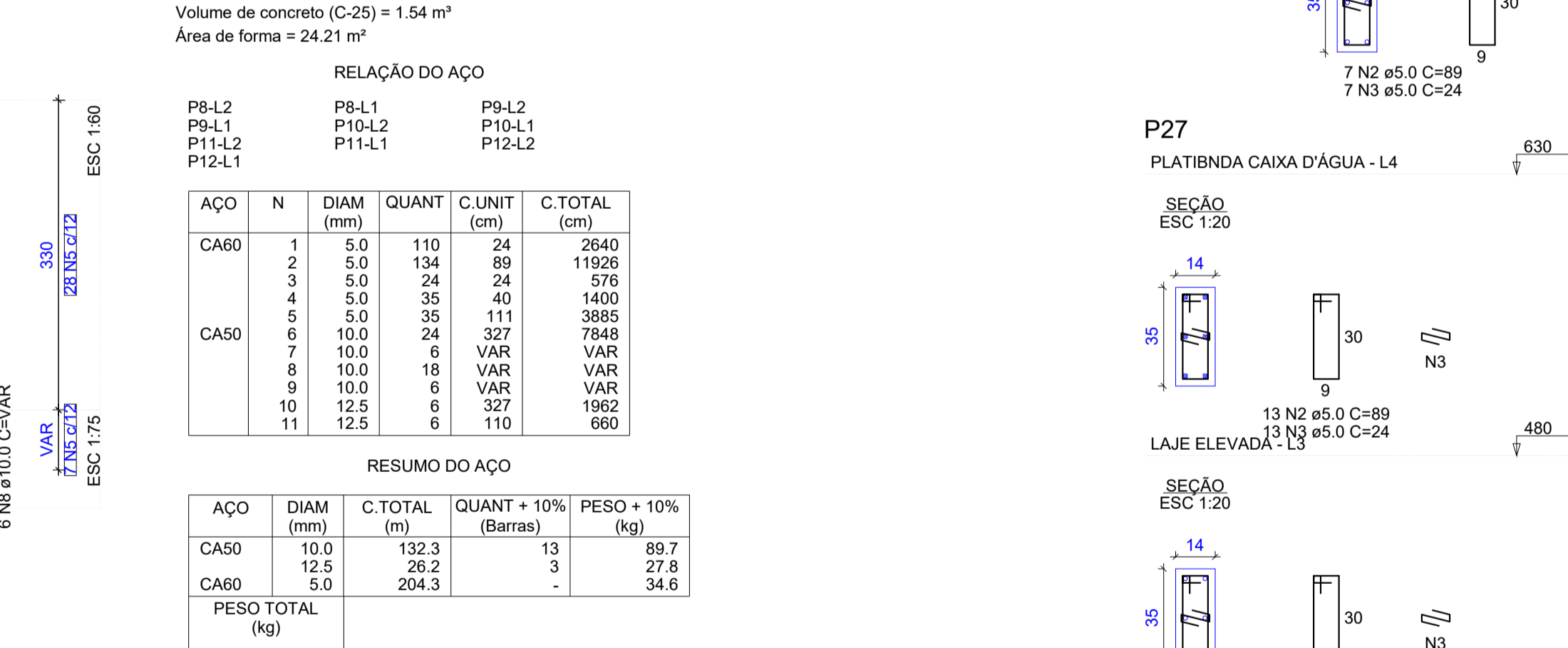
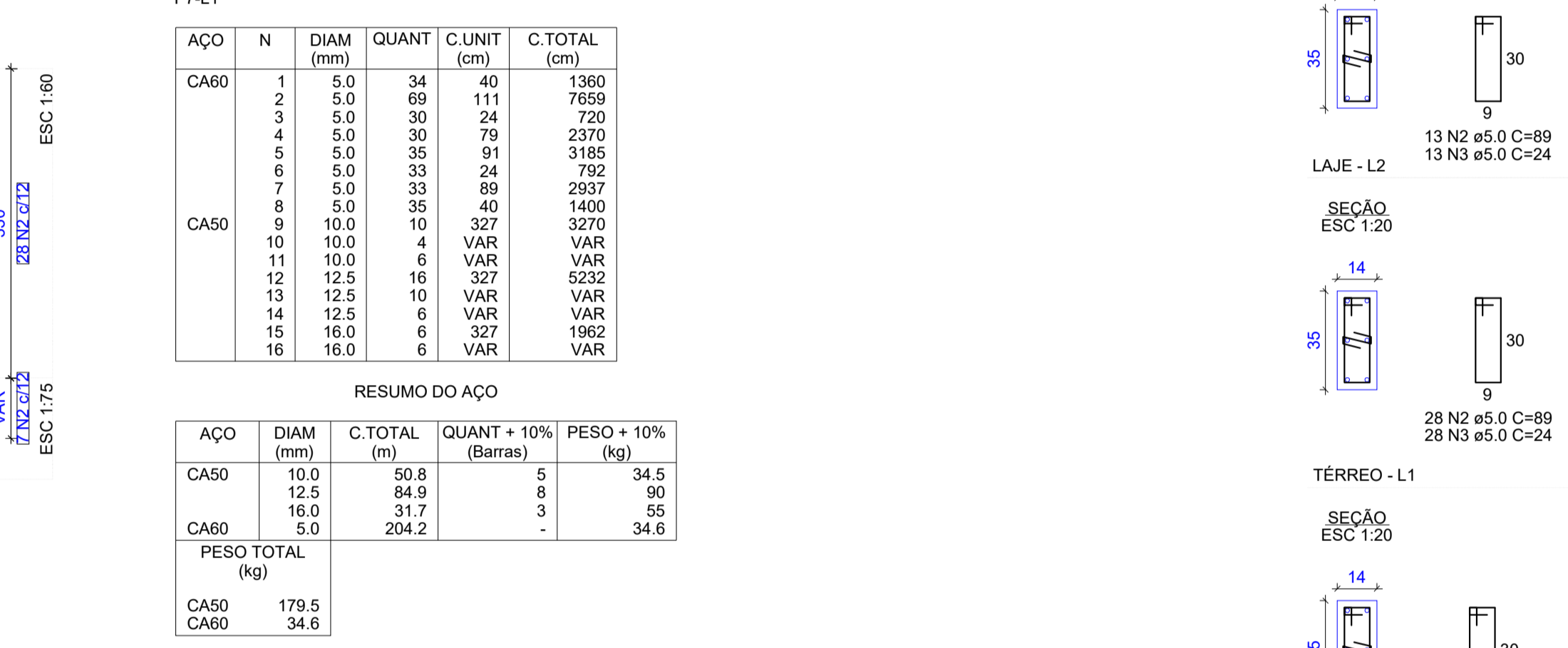
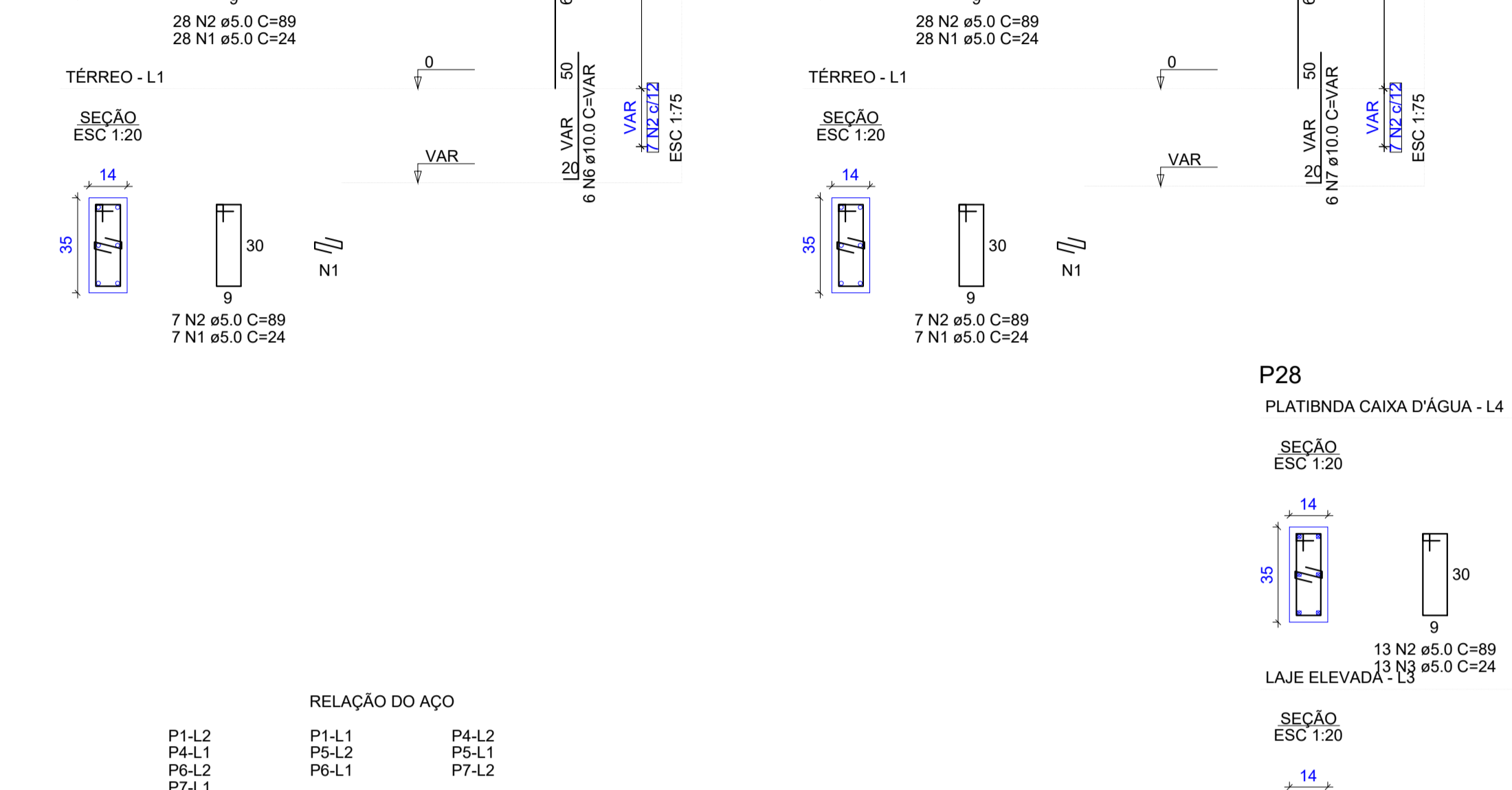
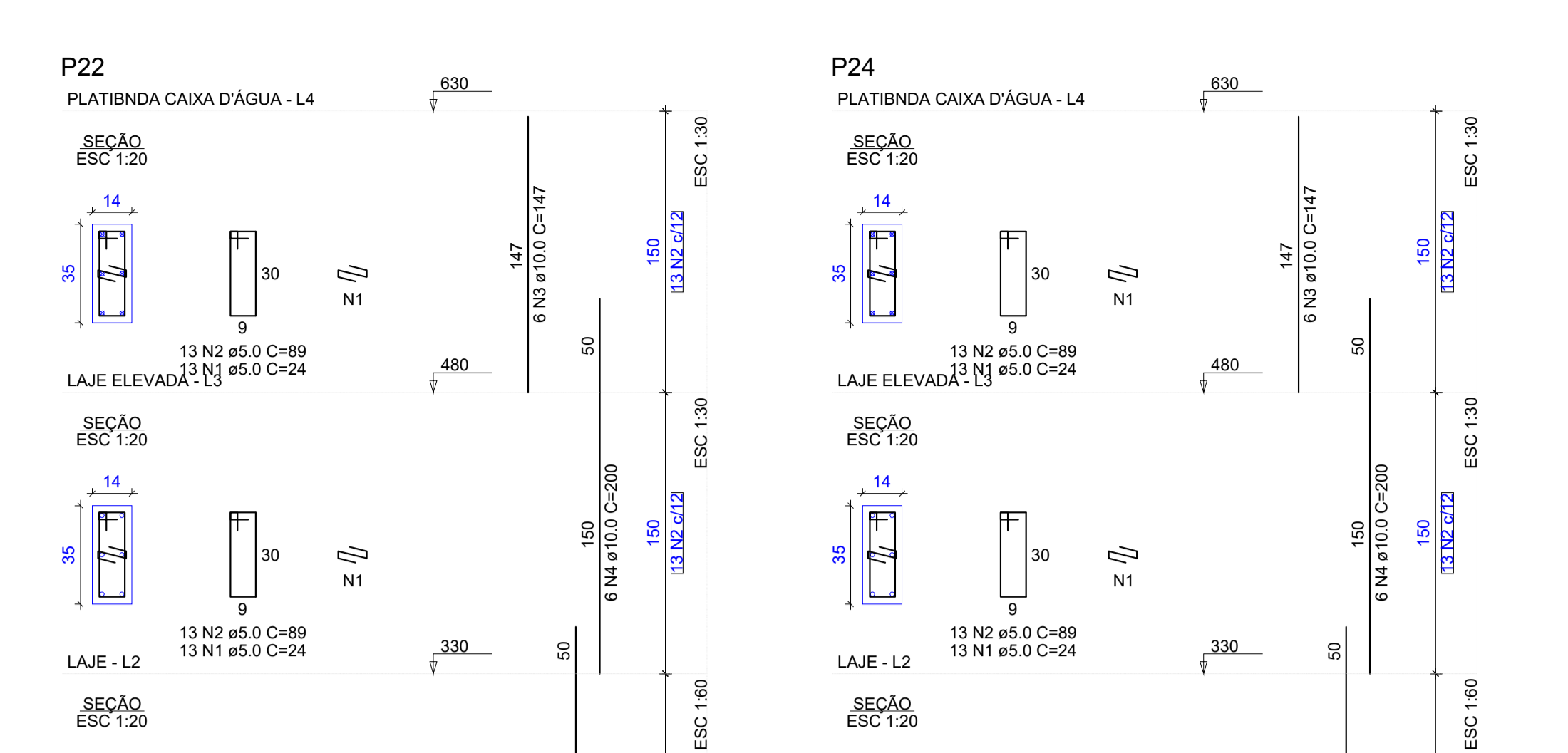
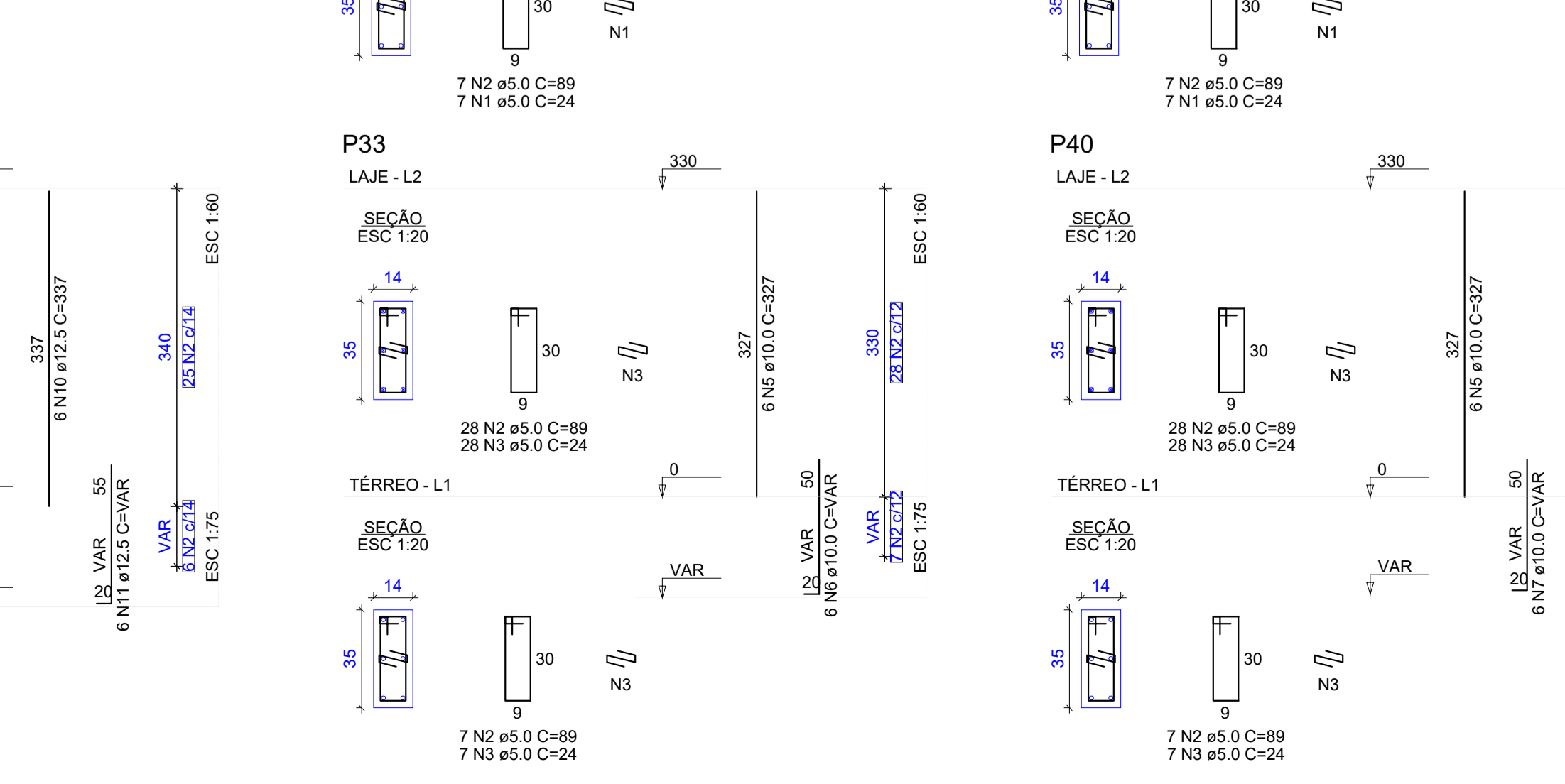
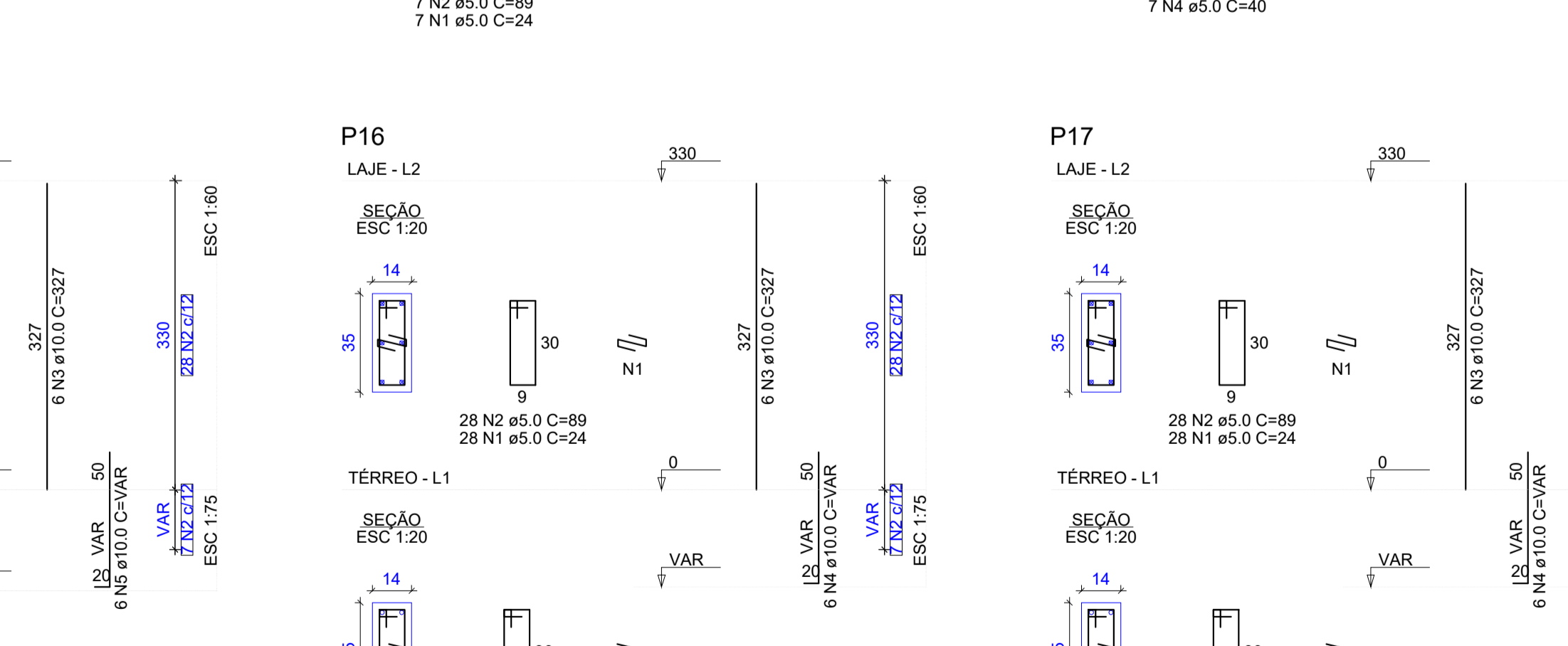
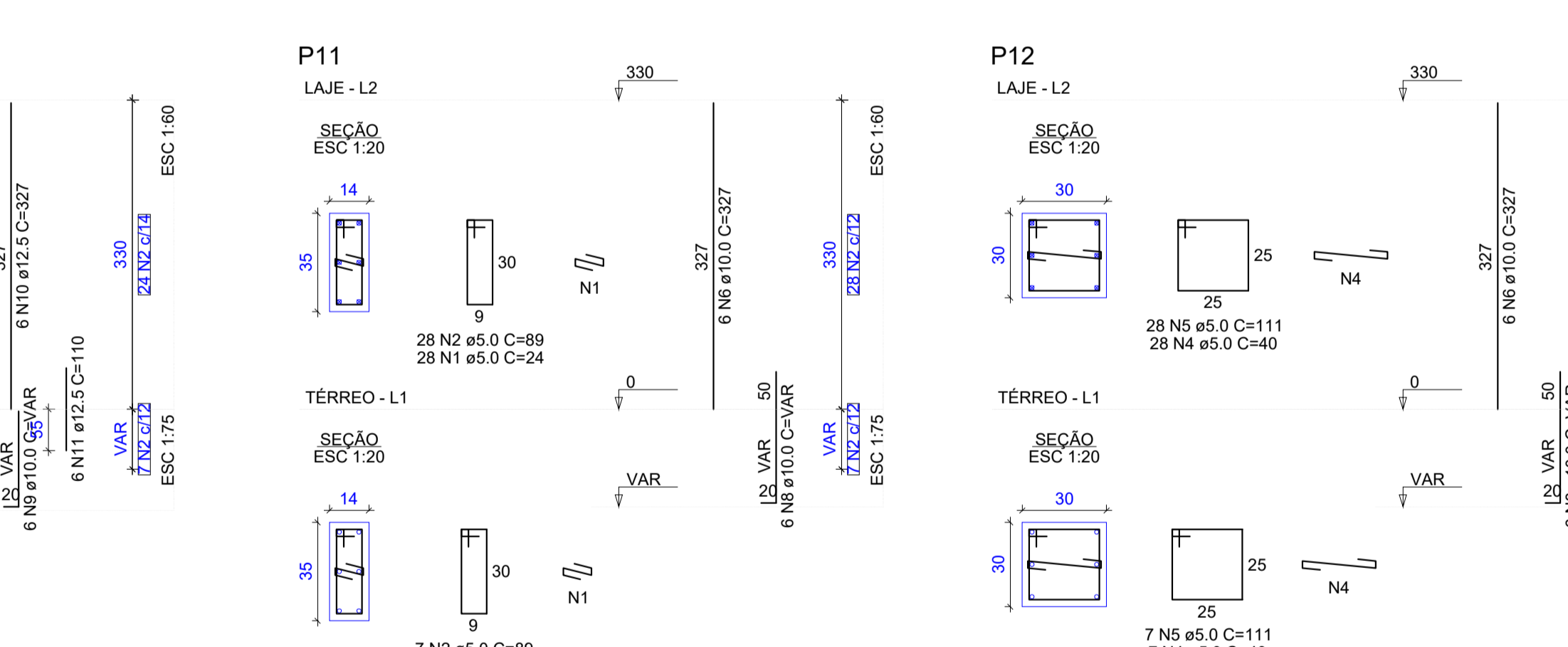
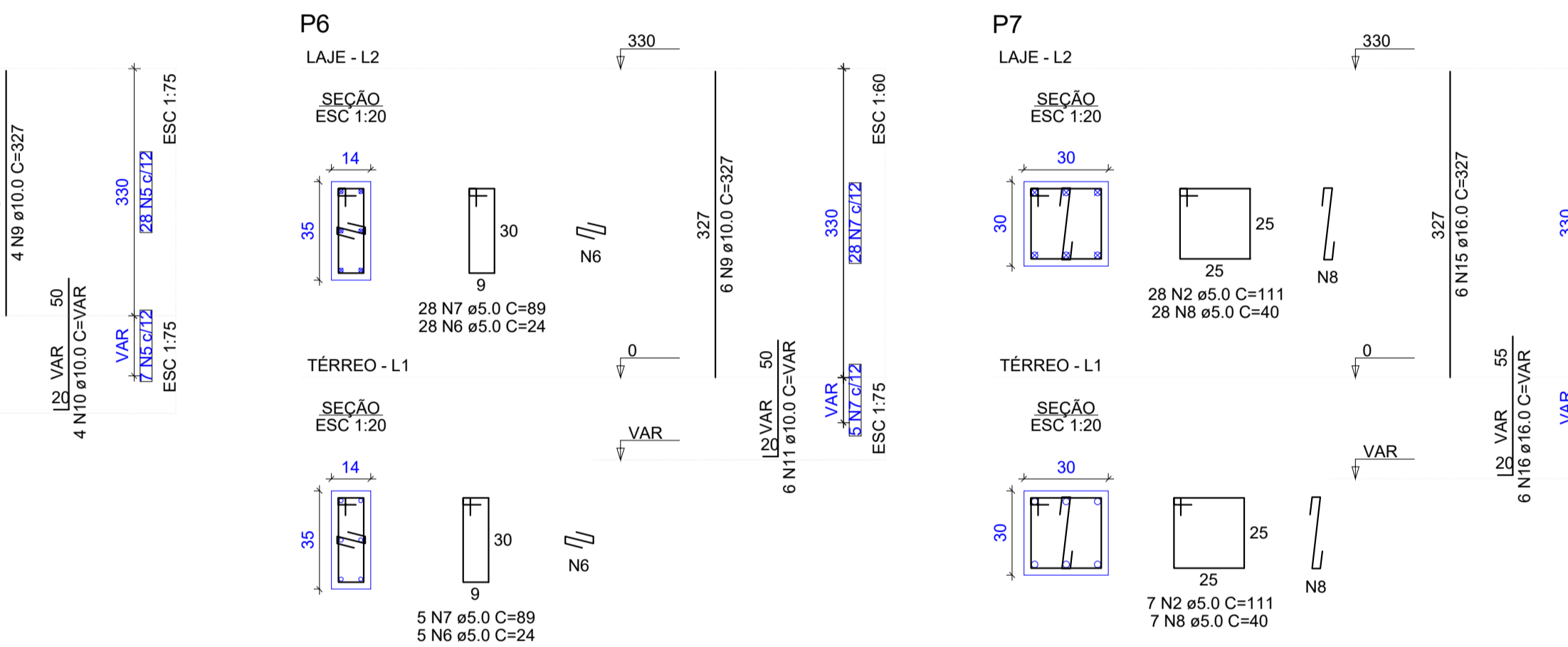
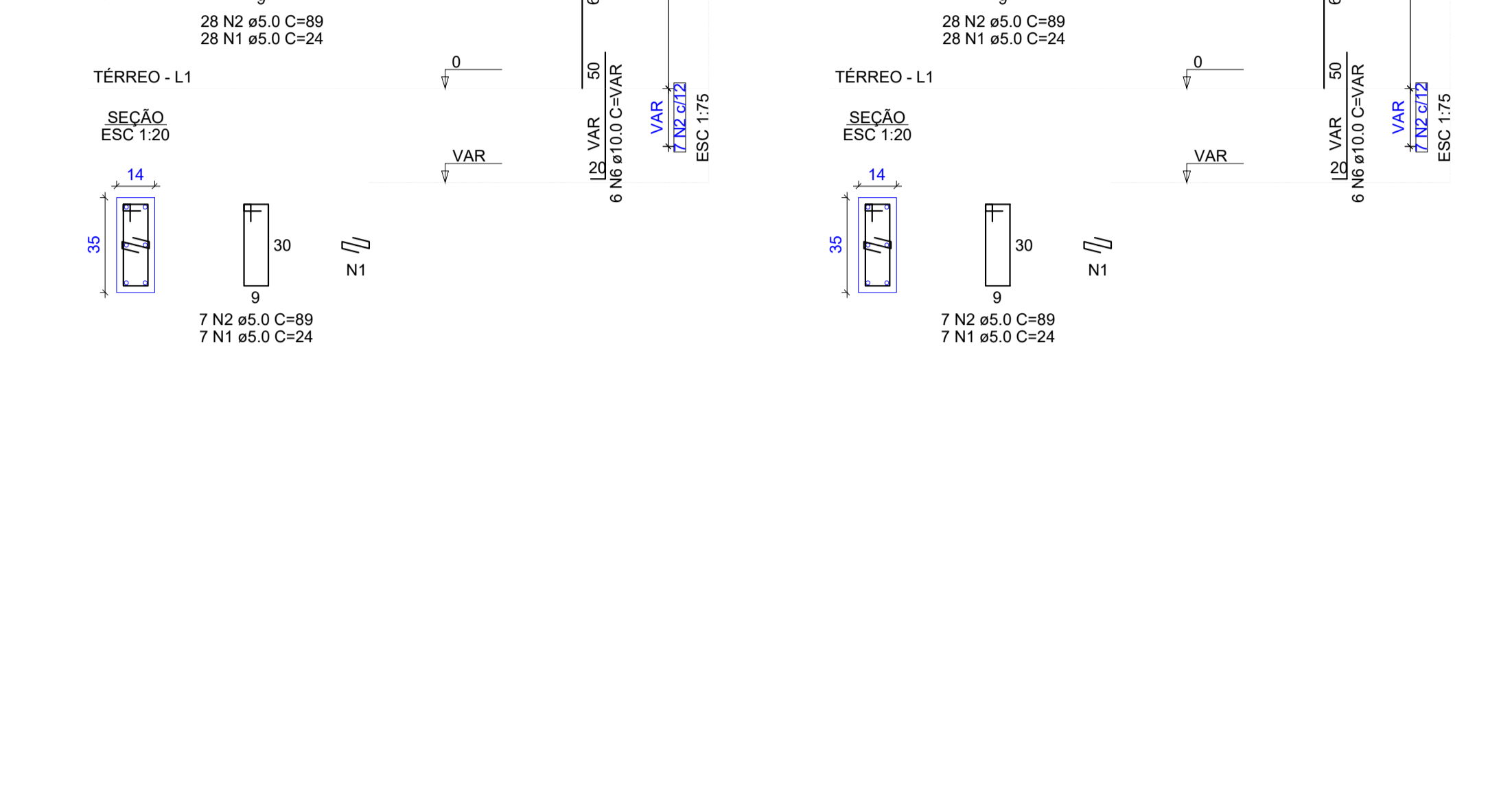
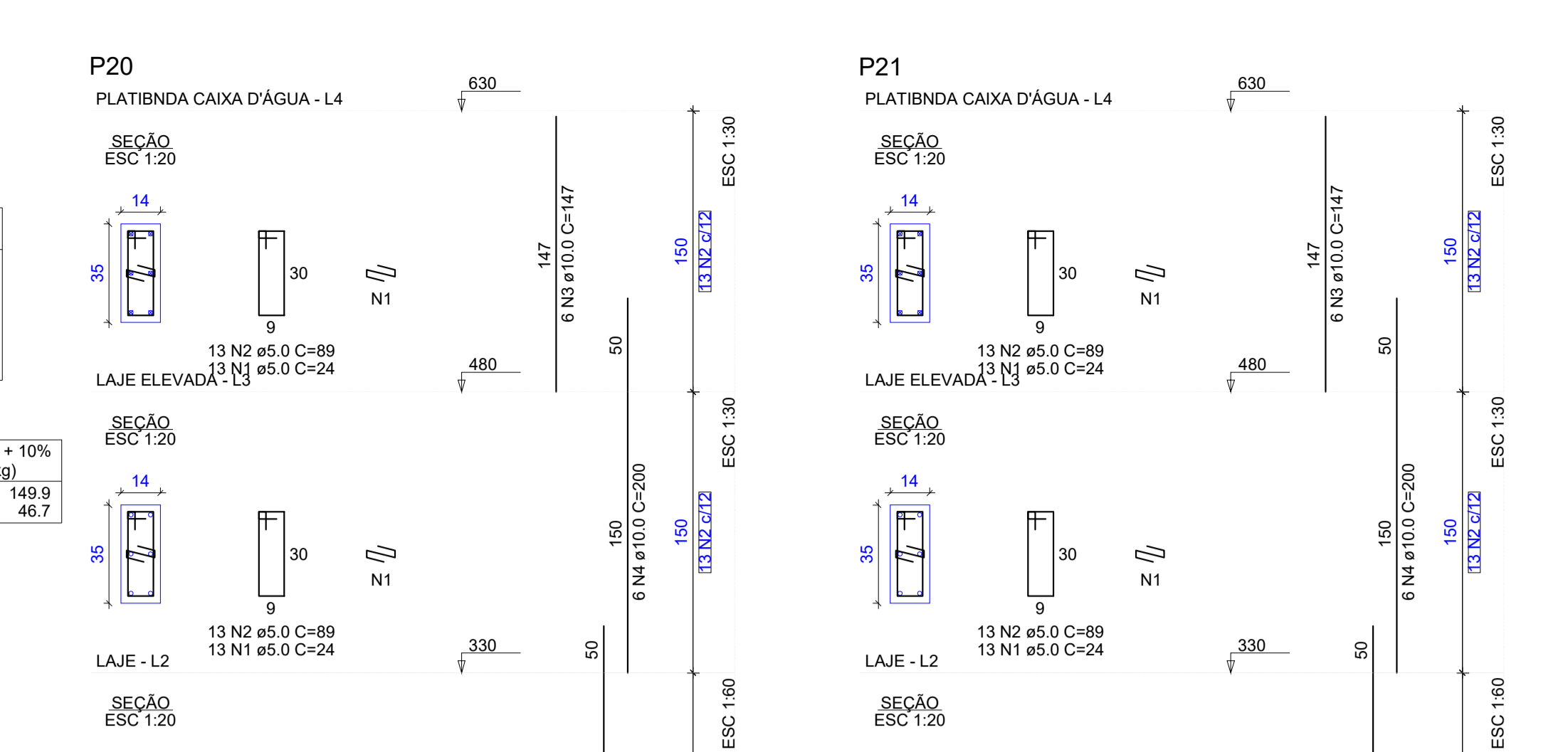
RELAÇÃO DO AÇO

ACO	N	DIAM (mm)	QUANT	C.UNIT (cm)	C.TOTAL (cm)
CA50	1	5.0	150	24	3600
CA50	2	5.0	150	89	13500
CA50	3	10.0	167	89	14863
CA50	4	10.0	15	VAR	VAR
CA50	5	10.0	18	VAR	VAR
CA50	6	10.0	18	VAR	VAR
CA50	7	10.0	18	VAR	VAR
CA50	8	10.0	18	VAR	VAR
CA50	9	10.0	18	VAR	VAR
CA50	10	12.5	16	337	5392
CA50	11	12.5	10	VAR	VAR
CA50	12	12.5	10	VAR	VAR
CA50	13	12.5	10	VAR	VAR
CA50	14	12.5	16	337	5392
CA50	15	16.0	6	379	1962
CA50	16	16.0	6	VAR	VAR

RESUMO DO AÇO

ACO	DIAM (mm)	C.TOTAL (m)	QUANT + 10% (Barras)	PESO + 10% (kg)
CA50	5.0	10.0	102.6	55.6
CA50	5.0	5.0	102.6	55.6
CA50	10.0	4	524	46.7
CA50	10.0	4	524	46.7

Volume de concreto (C-25) = 1.14 m³
Área de forma = 22.70 m²



EXECUÇÃO:

ESTRUTURAL RESIDENCIAL
Endereço: Alameda Arzoz Od. 02 Lt. 08-B Loteamento Vilaaggio Bocho Rodovia GO 670 Km 13 Goiânia - GO CEP: 75700-000

Edificação Residencial
Plano Térreo

PROPRIETÁRIO:
GERALDO DANIEL AMORIM FERREIRA
ARQUITETO URBANISTA

PROJETAR:
Daniel Amorim - Arquiteto
Diego Eloi - Eng. Civil

06/06

Outubro de 2018