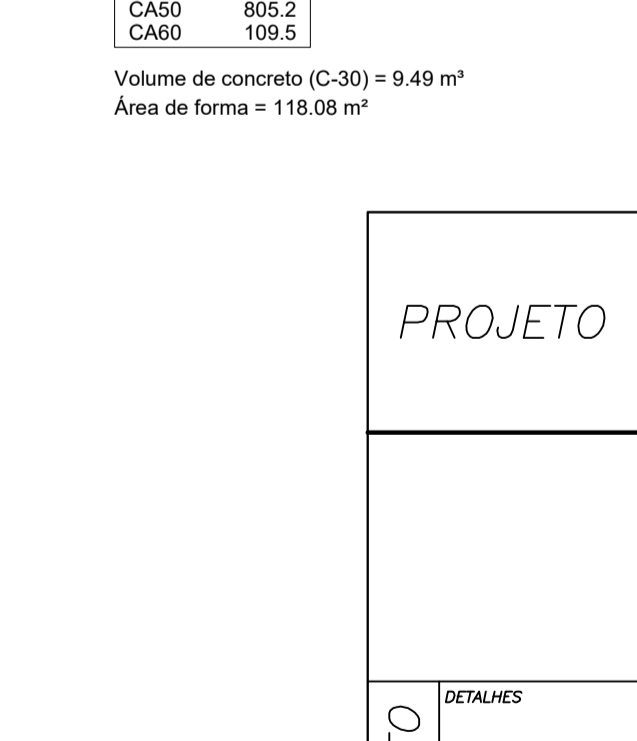
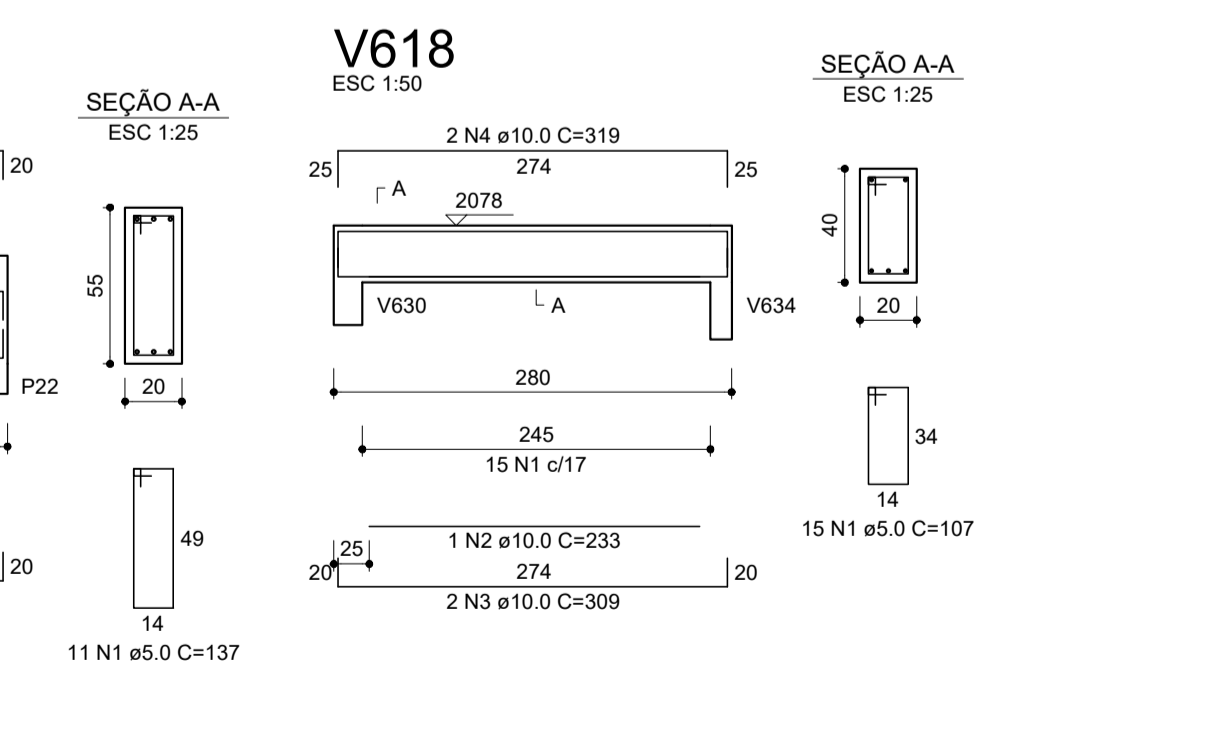
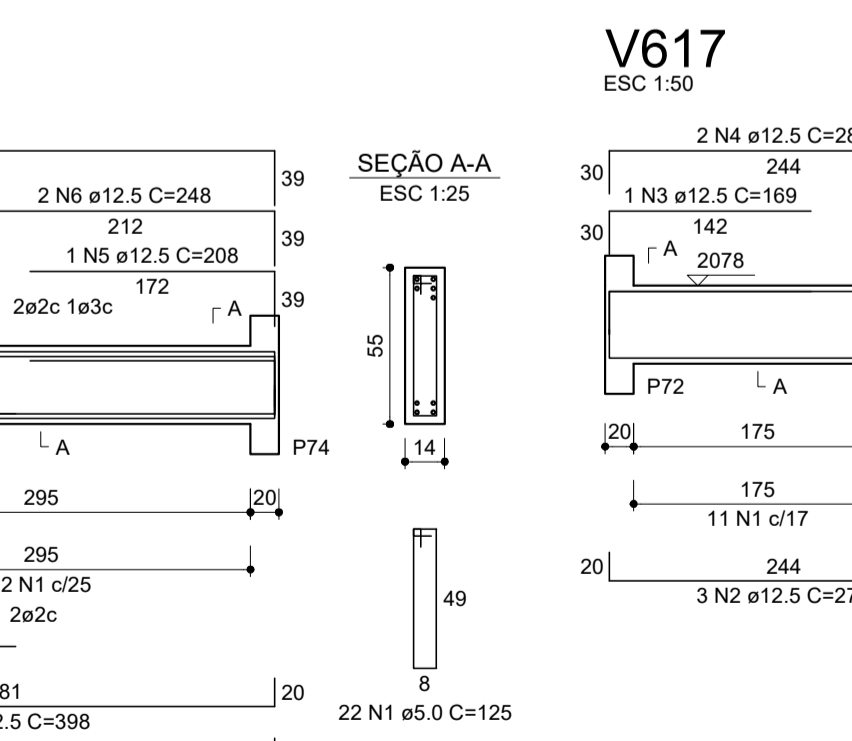
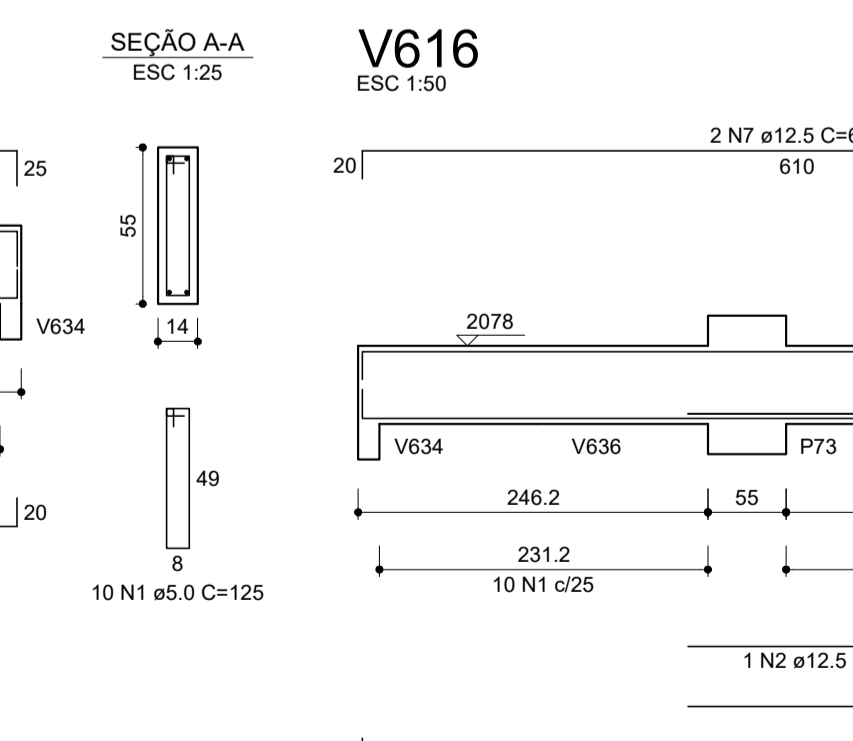
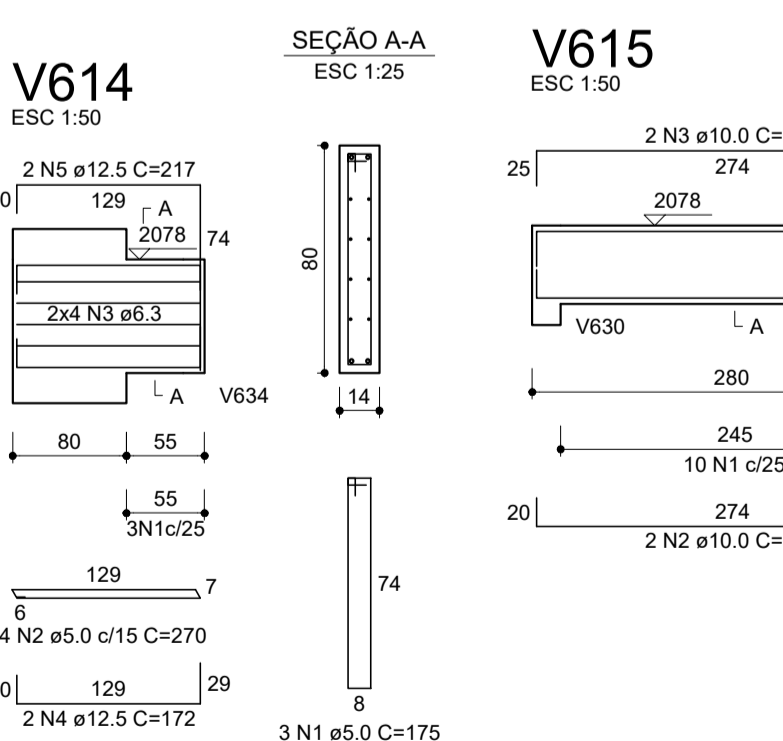
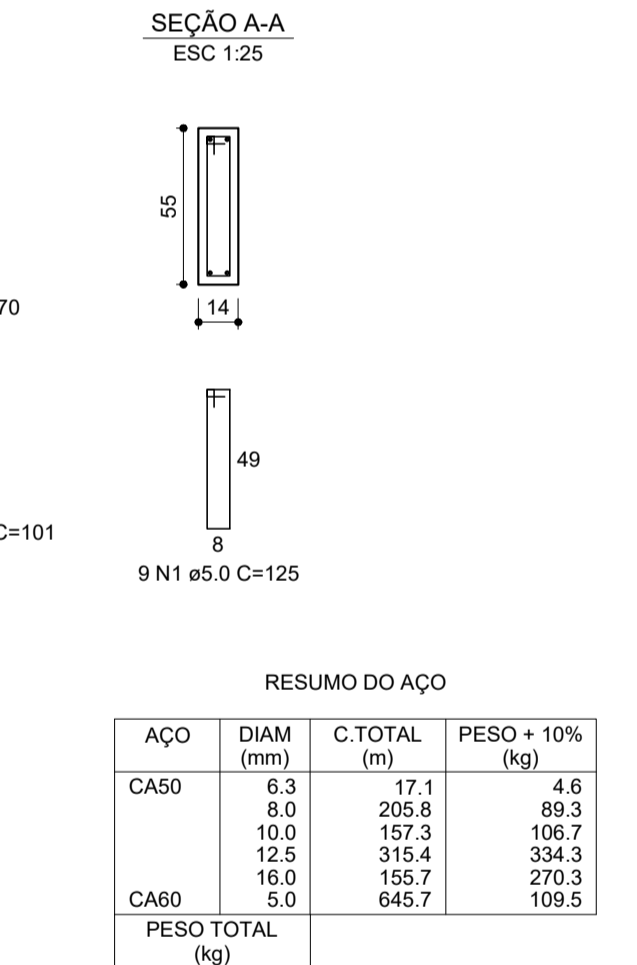
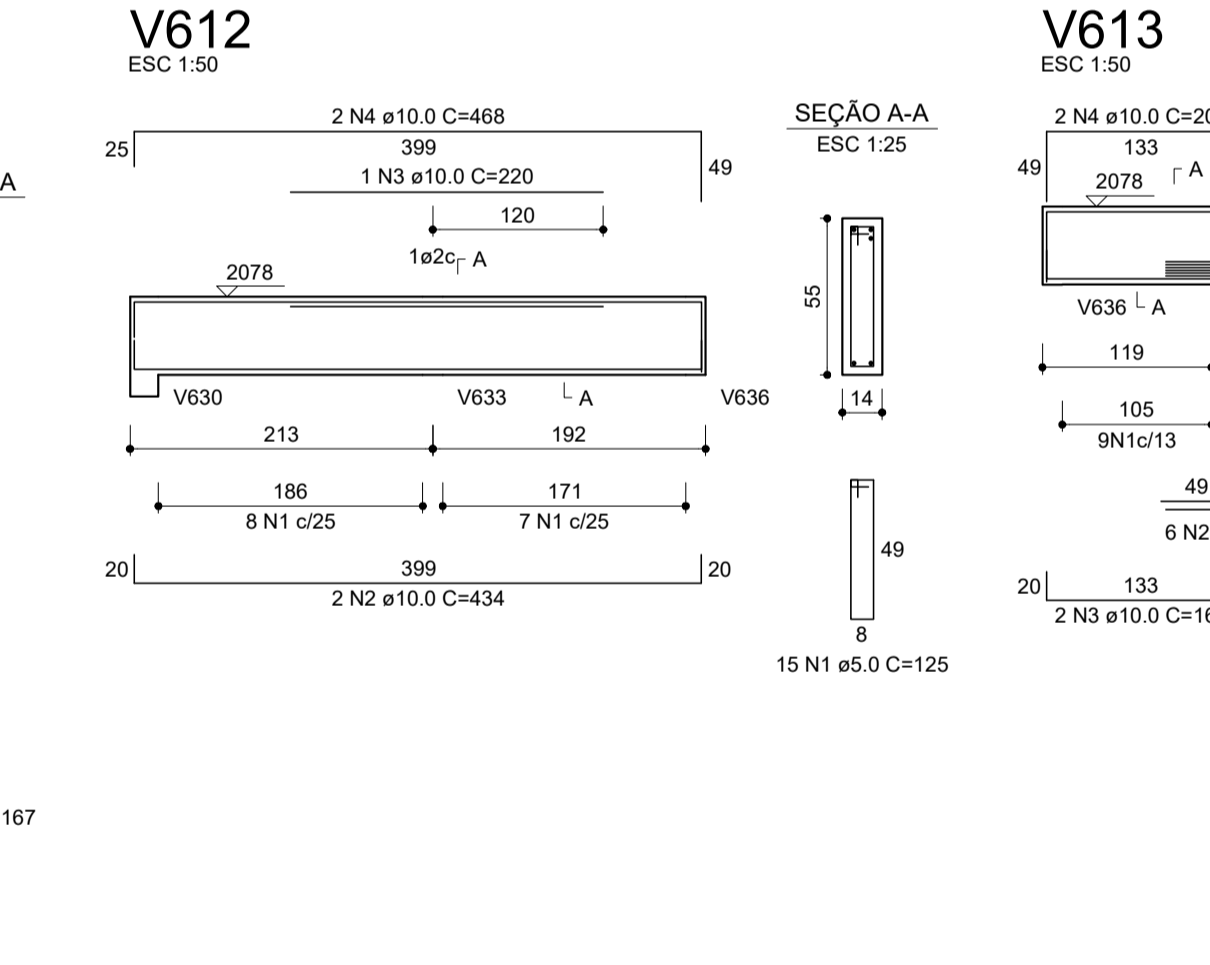
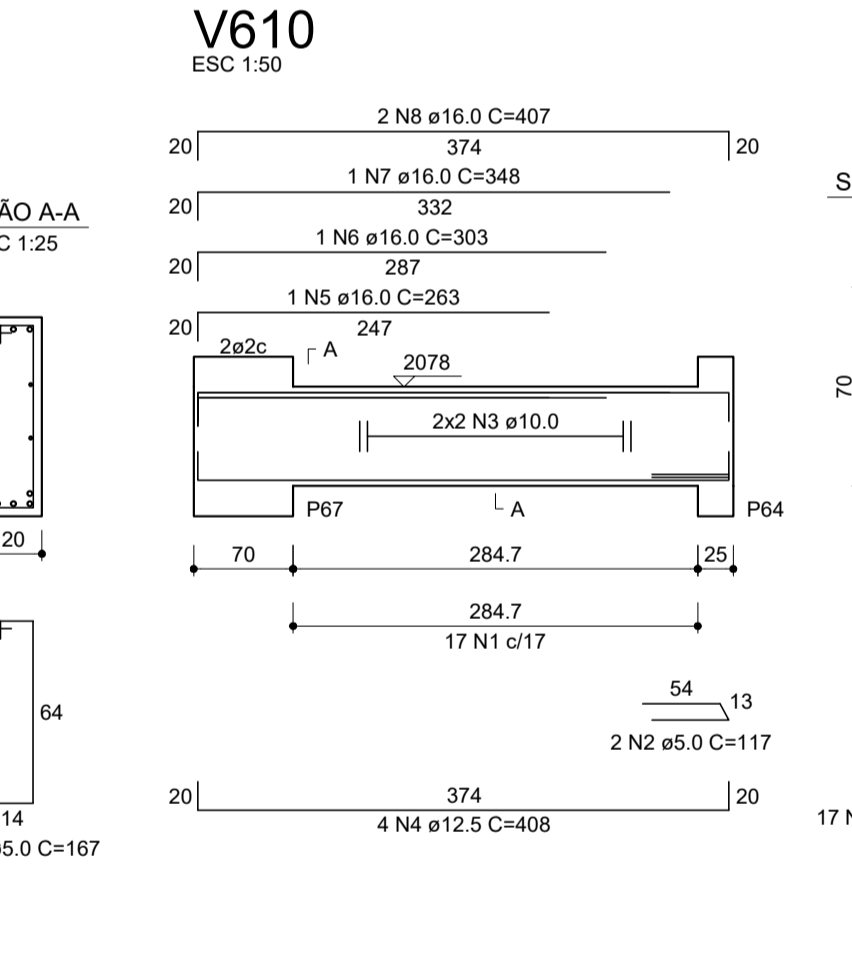
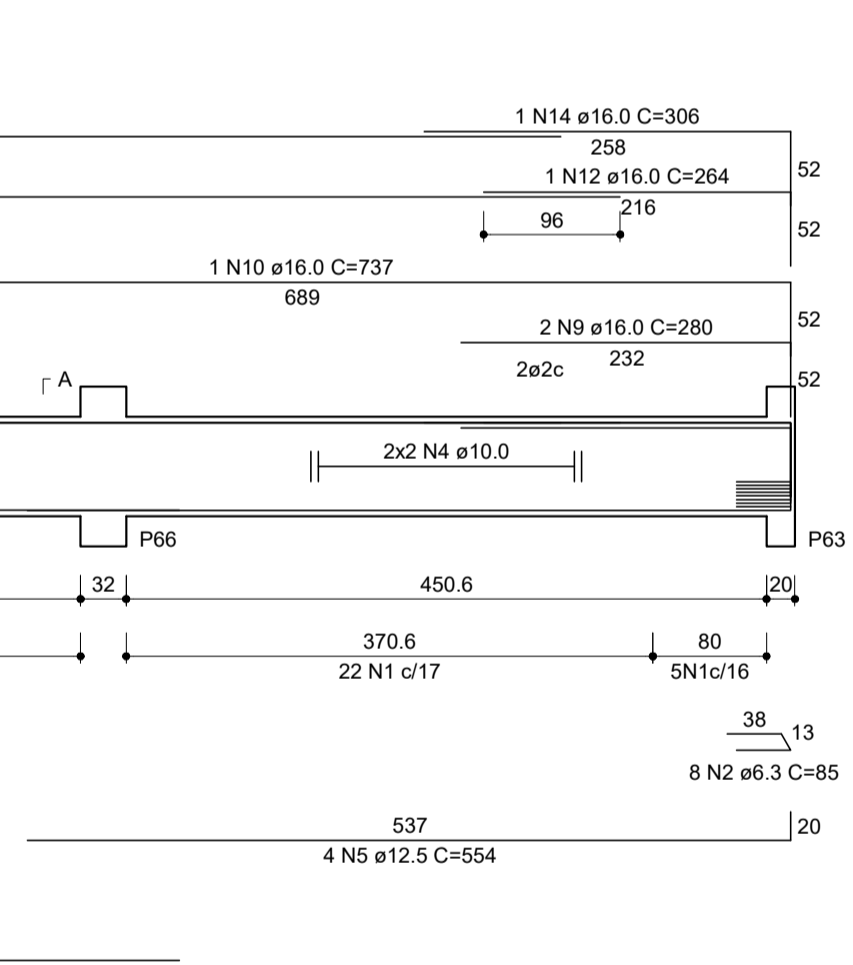
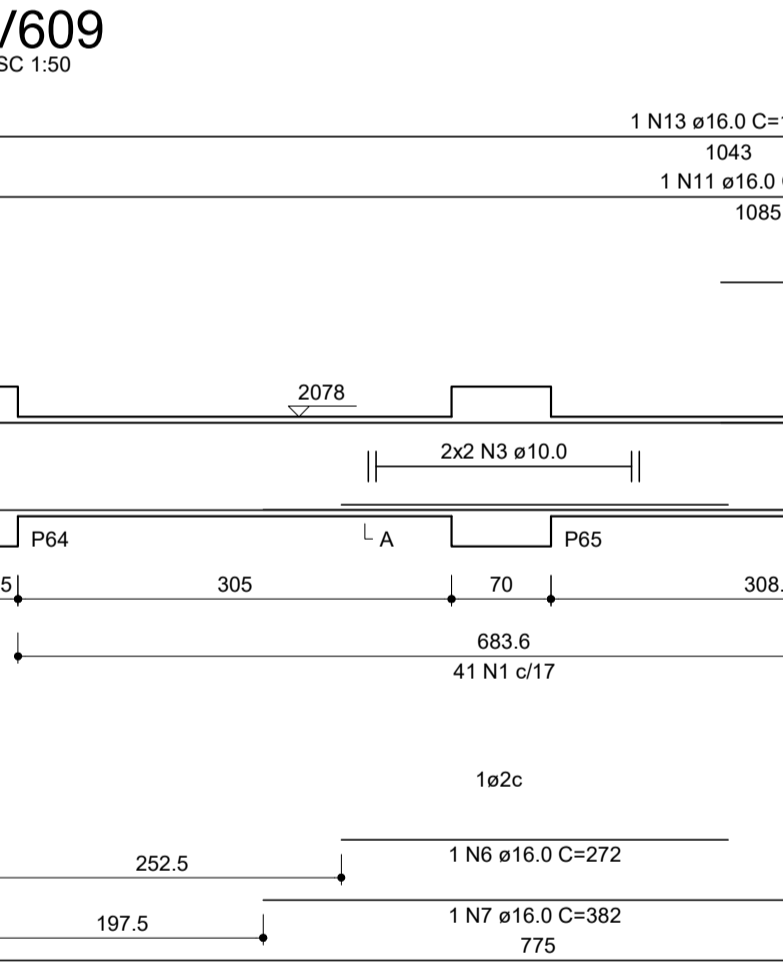
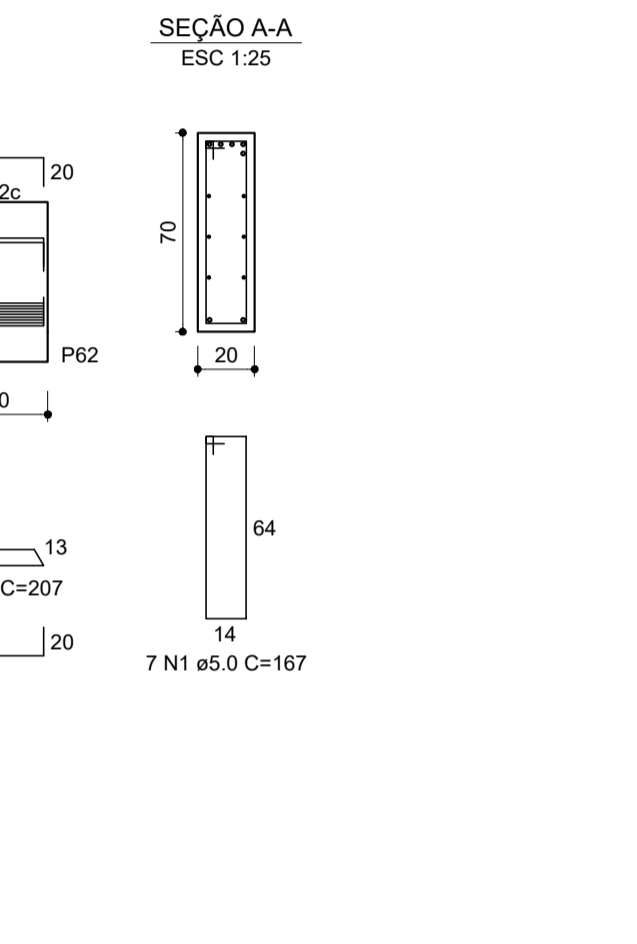
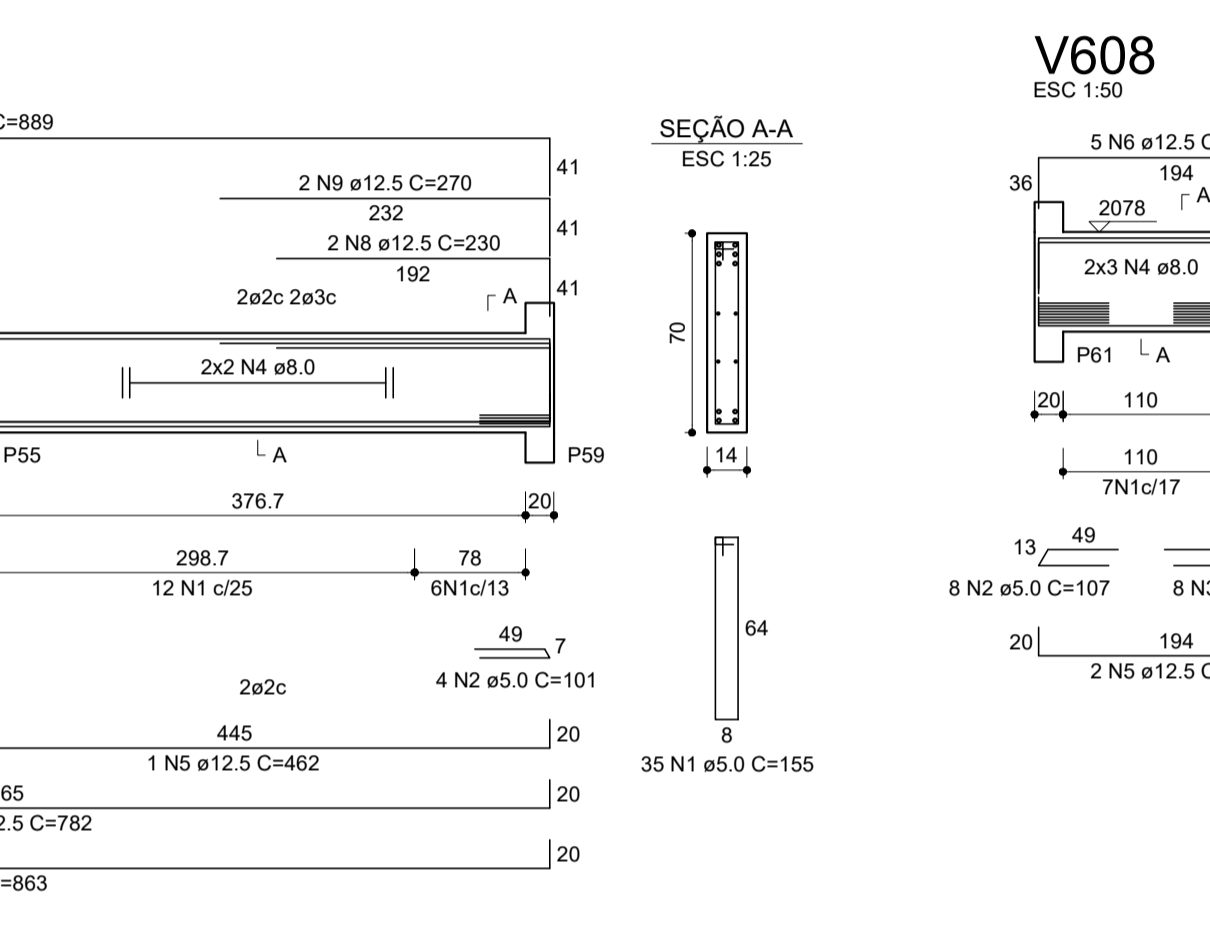
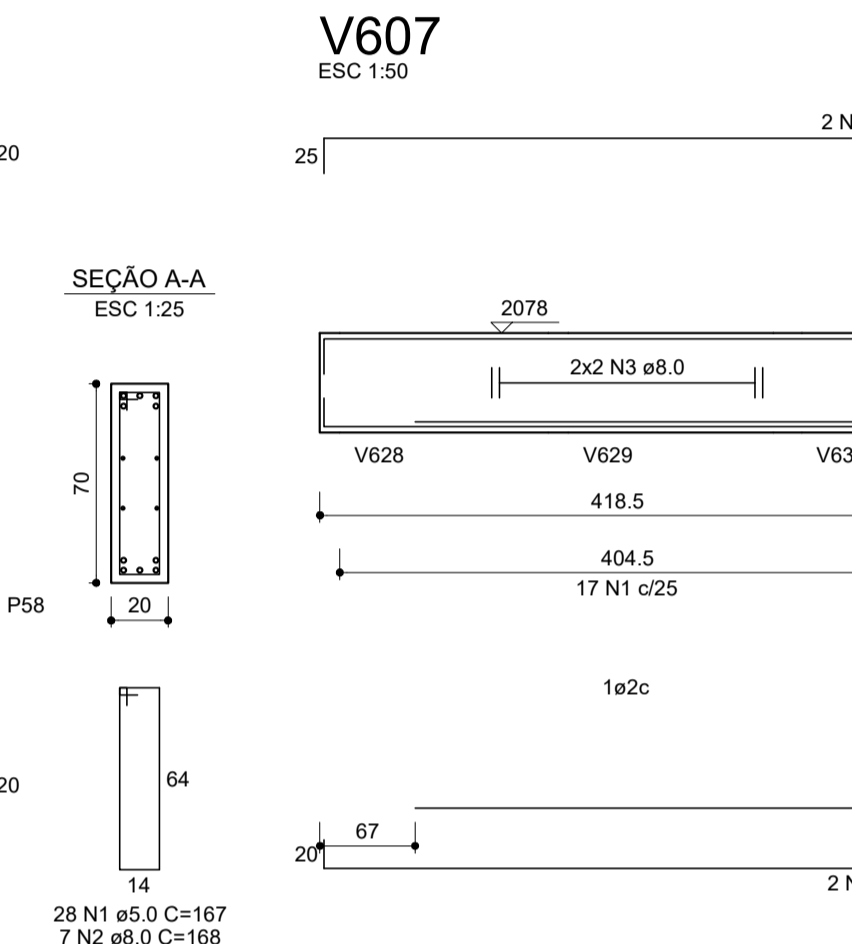
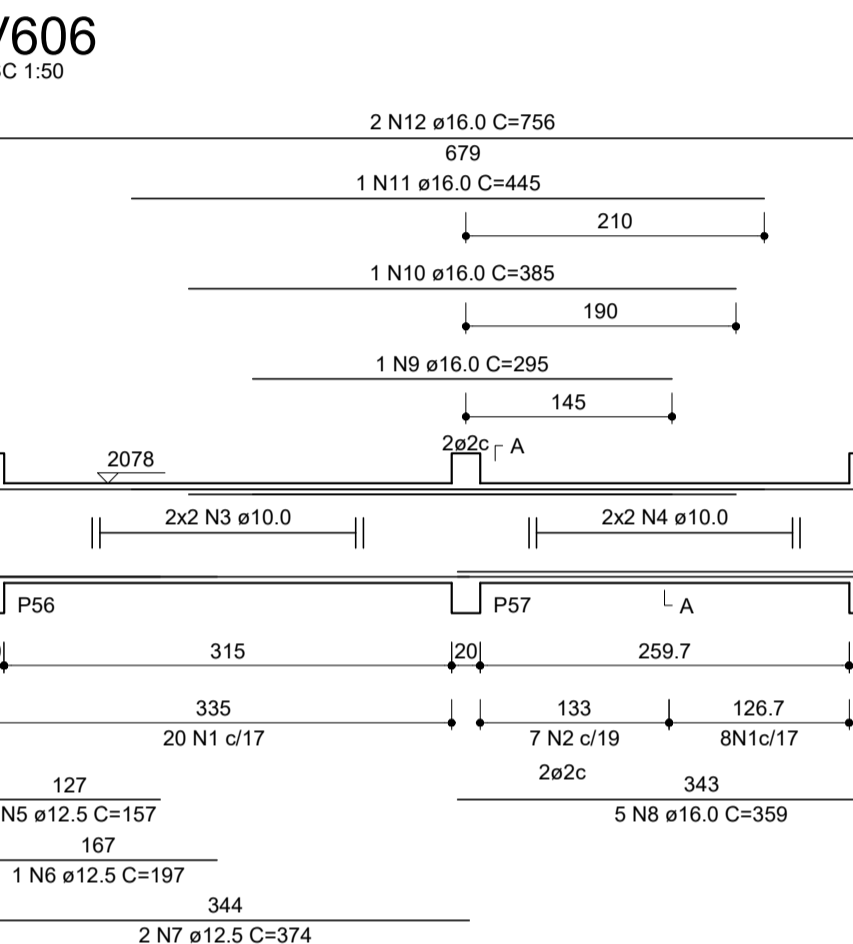
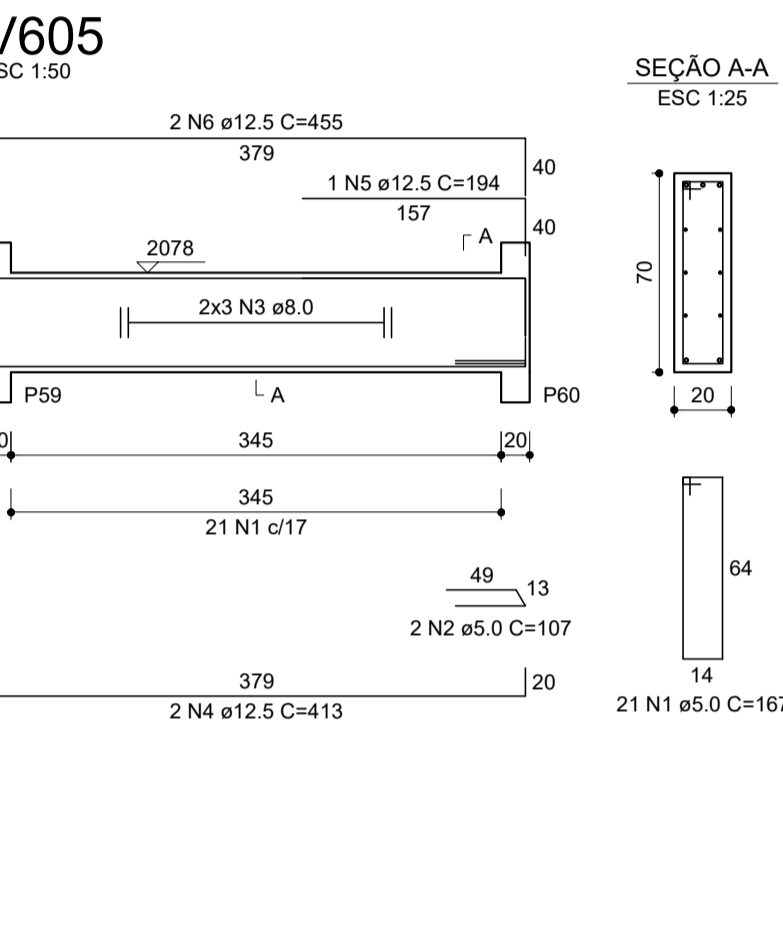


RELAÇÃO DO AÇO

ELEMENTO	AÇO	N	DIAM (mm)	QUANT	C.UNIT (cm)	C.TOTAL (cm)
V601	CA60	1	5.0	20	167	3340
	CA60	2	5.0	4	107	428
	CA50	3	8.0	6	corr	2154
	CA50	4	12.5	2	393	786
V602	CA50	5	12.5	2	166	332
	CA50	6	12.5	2	421	842
	CA60	1	5.0	20	167	3340
	CA60	2	5.0	16	107	1712
V603	CA50	3	8.0	6	corr	2226
	CA50	4	12.5	3	405	1215
	CA50	5	12.5	2	437	874
	CA60	1	5.0	23	167	3841
V604	CA60	2	5.0	5	107	535
	CA50	3	8.0	6	corr	2468
	CA50	4	12.5	3	445	1335
	CA50	5	12.5	2	211	422
V605	CA50	6	12.5	1	256	256
	CA50	7	12.5	2	478	956
	CA60	1	5.0	37	167	6179
	CA60	2	5.0	5	107	535
V606	CA50	3	8.0	6	corr	3900
	CA50	4	12.5	3	684	2052
	CA50	5	12.5	1	199	199
	CA50	6	12.5	1	244	244
V607	CA50	7	12.5	1	190	190
	CA50	8	12.5	2	715	1430
	CA60	1	5.0	21	167	3507
	CA60	2	5.0	2	107	214
V608	CA50	3	8.0	6	corr	2274
	CA50	4	12.5	2	413	826
	CA50	5	12.5	1	194	194
	CA50	6	12.5	1	455	455
V609	CA60	1	5.0	28	167	4676
	CA50	2	8.0	7	168	1176
	CA50	3	10.0	4	corr	1398
	CA50	4	10.0	4	corr	1376
V610	CA50	5	12.5	1	157	157
	CA50	6	12.5	1	197	197
	CA50	7	12.5	2	374	748
	CA50	8	16.0	5	359	1795
V611	CA50	9	16.0	1	295	295
	CA50	10	16.0	1	385	385
	CA50	11	16.0	1	445	445
	CA50	12	16.0	2	756	1512
V612	CA60	1	5.0	35	155	5425
	CA60	2	5.0	4	101	404
	CA60	3	8.0	4	corr	1728
	CA50	4	8.0	4	corr	1644
V613	CA50	5	12.5	1	462	462
	CA50	6	12.5	1	762	762
	CA50	7	12.5	2	863	1726
	CA50	8	12.5	2	230	460
V614	CA50	9	12.5	2	270	540
	CA50	10	12.5	2	889	1778
	CA60	1	5.0	7	167	1169
	CA60	2	5.0	8	107	856
V615	CA60	3	5.0	8	207	1656
	CA50	4	8.0	6	corr	1184
	CA50	5	12.5	2	228	456
	CA50	6	12.5	5	244	1220
V616	CA60	1	5.0	68	167	11356
	CA50	2	8.0	8	85	680
	CA50	3	10.0	4	corr	2940
	CA50	4	10.0	4	corr	1988
V617	CA50	5	12.5	4	554	2216
	CA50	6	16.0	1	272	272
	CA50	7	16.0	1	382	382
	CA50	8	16.0	2	791	1582
V618	CA50	9	16.0	2	280	560
	CA50	10	16.0	1	737	737
	CA50	11	16.0	1	1122	1122
	CA50	12	16.0	1	264	264
V619	CA50	13	16.0	1	1080	1080
	CA50	14	16.0	1	305	305
	CA60	1	5.0	17	167	2839
	CA60	2	5.0	2	117	234
V620	CA50	3	10.0	4	corr	1696
	CA50	4	12.5	4	408	1632
	CA50	5	16.0	1	263	263
	CA50	6	16.0	1	303	303
V621	CA50	7	16.0	1	348	348
	CA50	8	16.0	2	407	814
	CA50	9	16.0	1	168	168
	CA50	10	16.0	4	1012	4048
V622	CA50	11	16.0	3	319	957
	CA60	1	5.0	15	125	1875
	CA50	2	10.0	2	434	868
	CA50	3	10.0	1	220	220
V623	CA50	4	10.0	2	468	936
	CA60	1	5.0	9	125	1125
	CA60	2	5.0	6	101	606
	CA50	3	10.0	2	168	336
V624	CA50	4	10.0	2	209	418
	CA60	1	5.0	3	175	525
	CA60	2	5.0	4	270	1080
	CA50	3	8.0	8	corr	1032
V625	CA50	4	12.5	2	172	344
	CA50	5	12.5	2	217	434
	CA60	1	5.0	10	125	1250
	CA50	2	10.0	2	309	618
V626	CA50	3	10.0	2	319	638
	CA60	1	5.0	22	125	2750
	CA50	2	12.5	1	199	199
	CA50	3	12.5	1	388	388
V627	CA50	4	12.5	2	644	1288
	CA50	5	12.5	1	208	208
	CA50	6	12.5	2	248	496
	CA50	7	12.5	2	663	1326
V628	CA60	1	5.0	11	137	1507
	CA50	2	12.5	3	278	834
	CA50	3	12.5	1	169	169
	CA50	4	12.5	2	288	576
V629	CA60	1	5.0	11	107	1075
	CA50	2	10.0	1	233	233
	CA50	3	10.0	2	309	618
	CA50	4	10.0	2	319	638



RESUMO DO AÇO

AÇO	DIAM (mm)	C.TOTAL (m)	PESO + 10% (kg)
CA50	6.3	17.1	4.6
CA50	8.0	205.8	89.3
CA50	10.0	157.3	106.7
CA50	12.5	315.4	334.3
CA50	16.0	155.7	270.3
CA50	5.0	646.7	109.5
PESO TOTAL (kg)			
CA50		805.2	
CA60		109.5	

Volume de concreto (C-30) = 9.49 m³  
Área de forma = 118.08 m²

**PROJETO ESTRUTURAL**

**RODARTE**  
ENGENHARIA E PROJETOS  
www.rodarteengenharia.com.br

FOLHA	50-98	ESCALA	INDICADA
	COTAS		DATA
CENTIMETROS		SET. / 2018	
PROJETO	DETALHES		END. DA OBRA
	VIGAS DO PAVT TIPO 11		Fck DA ESTRUTURA
PROPRIETÁRIO	REVISÃO		30 MPa
RESPONSÁVEL P/ PROJETO ESTRUTURAL		R-0	
LUCIANO SERRA RODARTE			