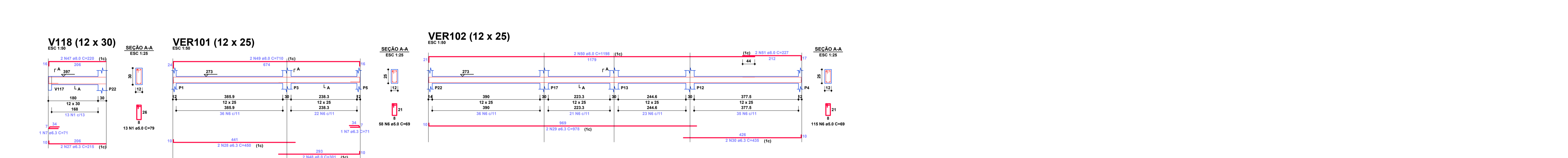
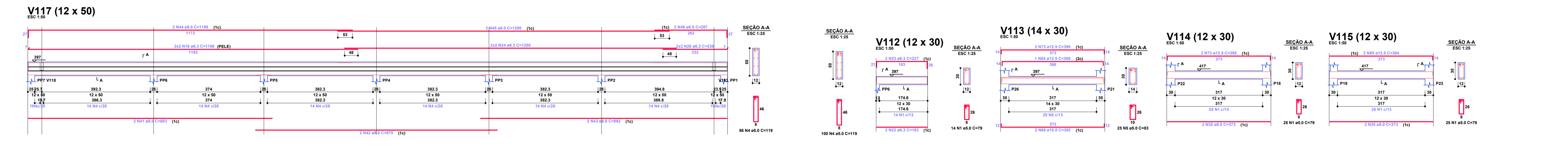
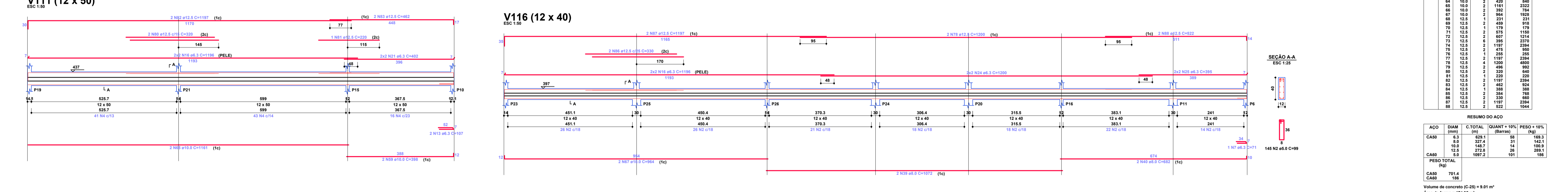
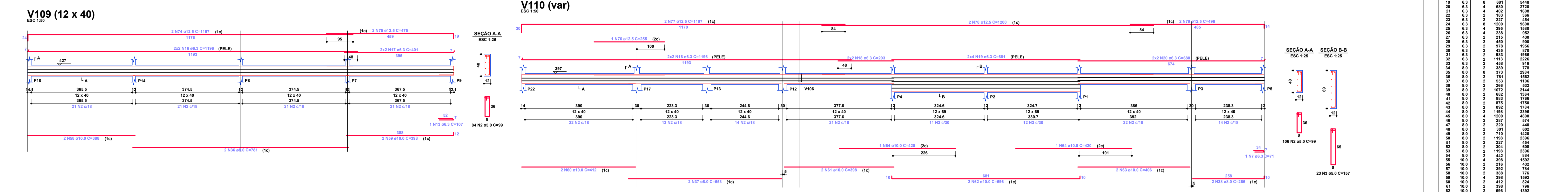


RELAÇÃO DO AÇO

ACO	N	DIAM (mm)	QUANT	C.UNIT (cm)	C.TOTAL (cm)
CASO	1	8.0	264	79	20866
	2	8.0	335	99	33165
	3	8.0	23	107	2461
	4	8.0	186	119	22134
	5	8.0	25	83	2078
	6	8.0	404	69	27976
	7	6.3	11	71	781
	8	6.3	4	205	820
	9	6.3	4	227	908
	10	6.3	1	127	127
	11	6.3	2	107	107
	12	6.3	2	240	480
	13	6.3	4	107	428
	14	6.3	2	226	452
	15	6.3	2	240	480
	16	6.3	20	1196	23920
	17	6.3	4	401	1604
	18	6.3	4	205	812
	19	6.3	4	181	724
	20	6.3	4	680	2720
	21	6.3	4	462	1848
	22	6.3	2	181	724
	23	6.3	2	227	454
	24	6.3	8	1200	9600
	25	6.3	2	215	430
	26	6.3	2	405	810
	27	6.3	2	215	430
	28	6.3	2	215	430
	29	6.3	2	978	1956
	30	6.3	2	978	1956
	31	6.3	2	983	1966
	32	6.3	2	983	1966
	33	6.3	2	458	916
	34	6.3	2	389	778
	35	8.0	8	373	2984
	36	8.0	2	583	1166
	37	8.0	2	583	1166
	38	8.0	2	1072	2144
	39	8.0	2	883	1766
	40	8.0	2	883	1766
	41	8.0	2	883	1766
	42	8.0	2	1882	3764
	43	8.0	2	1882	3764
	44	8.0	4	1200	4800
	45	8.0	4	1200	4800
	46	8.0	4	1200	4800
	47	8.0	2	220	440
	48	8.0	2	710	1420
	49	8.0	2	710	1420
	50	8.0	2	227	454
	51	8.0	2	227	454
	52	8.0	2	227	454
	53	8.0	2	1198	2396
	54	8.0	2	1198	2396
	55	10.0	4	382	1528
	56	10.0	4	382	1528
	57	10.0	2	964	1928
	58	10.0	2	964	1928
	59	10.0	2	459	918
	60	10.0	2	459	918
	61	10.0	2	878	1756
	62	10.0	2	878	1756
	63	10.0	2	406	812
	64	10.0	2	406	812
	65	10.0	2	1161	2322
	66	10.0	2	1161	2322
	67	10.0	2	964	1928
	68	12.5	2	459	918
	69	12.5	2	459	918
	70	12.5	2	878	1756
	71	12.5	2	878	1756
	72	12.5	2	607	1214
	73	12.5	6	385	2310
	74	12.5	1	1197	2394
	75	12.5	2	475	950
	76	12.5	1	205	410
	77	12.5	2	1197	2394
	78	12.5	4	1200	4800
	79	12.5	2	496	992
	80	12.5	2	320	640
	81	12.5	1	220	220
	82	12.5	2	1197	2394
	83	12.5	2	462	924
	84	12.5	1	309	309
	85	12.5	2	384	768
	86	12.5	2	320	640
	87	12.5	2	1197	2394
	88	12.5	2	522	1044



RESUMO DO AÇO

ACO	DIAM (mm)	C.TOTAL (cm)	QUANT + 10% (Barra)	PESO + 10% (kg)
CASO	6.3	629.1	55	169.3
	8.0	327.4	31	142.1
	10.0	148.7	14	100.9
	12.5	272.8	26	295.1
	8.0	1097.2	101	186

PESO TOTAL (kg) 791.4

CASO 186

Volume de concreto (C=25) = 9.91 m³

Área de forma = 174.05 m²

Rosalbo F R da Silveira
Engenheiro Civil
Crea nº. 58.469/D-MG

ESTRUTURA DE CONCRETO ARMADO

OBRA INSTITUCIONAL
PREFEITURA MUNICIPAL DE GURUPI - TO