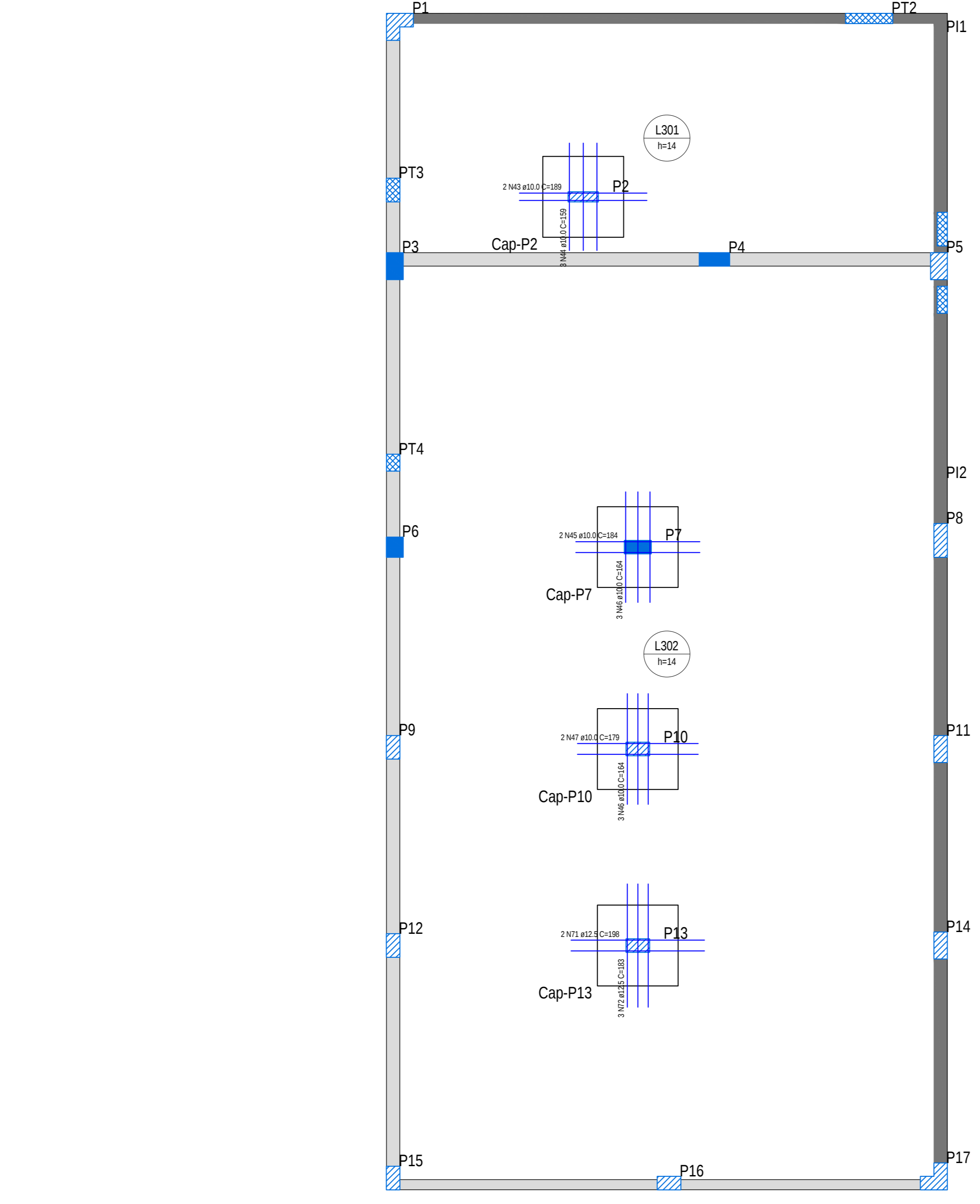
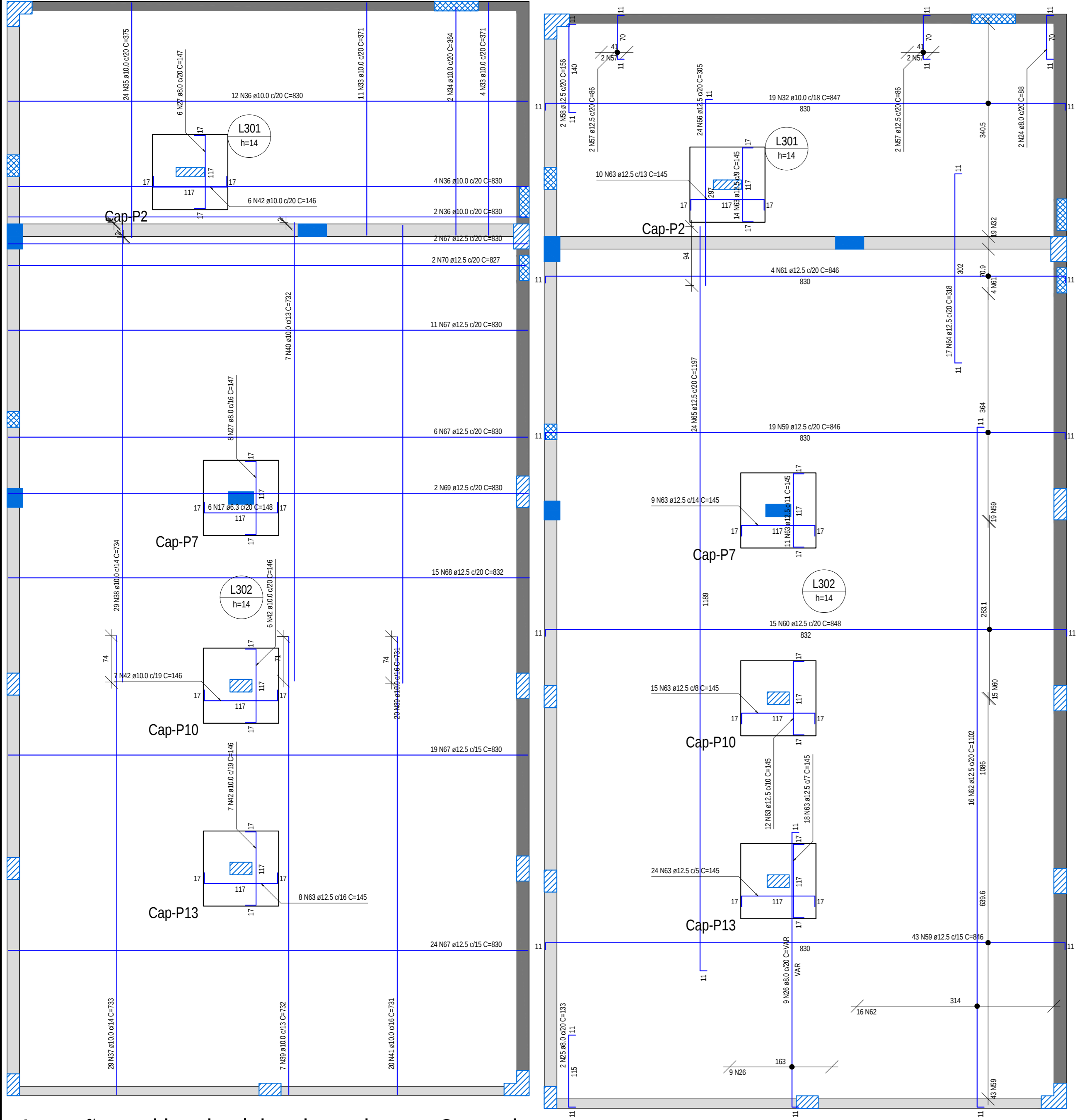


RELACÃO DO QDQD

Item	QTD	UNID	VALOR	TOTAL
1	1	m	100	100
2	1	m	100	100
3	1	m	100	100
4	1	m	100	100
5	1	m	100	100
6	1	m	100	100
7	1	m	100	100
8	1	m	100	100
9	1	m	100	100
10	1	m	100	100
11	1	m	100	100
12	1	m	100	100
13	1	m	100	100
14	1	m	100	100
15	1	m	100	100
16	1	m	100	100
17	1	m	100	100
18	1	m	100	100
19	1	m	100	100
20	1	m	100	100
21	1	m	100	100
22	1	m	100	100
23	1	m	100	100
24	1	m	100	100
25	1	m	100	100
26	1	m	100	100
27	1	m	100	100
28	1	m	100	100
29	1	m	100	100
30	1	m	100	100
31	1	m	100	100
32	1	m	100	100
33	1	m	100	100
34	1	m	100	100
35	1	m	100	100
36	1	m	100	100
37	1	m	100	100
38	1	m	100	100
39	1	m	100	100
40	1	m	100	100
41	1	m	100	100
42	1	m	100	100
43	1	m	100	100
44	1	m	100	100
45	1	m	100	100
46	1	m	100	100
47	1	m	100	100
48	1	m	100	100
49	1	m	100	100
50	1	m	100	100
51	1	m	100	100
52	1	m	100	100
53	1	m	100	100
54	1	m	100	100
55	1	m	100	100
56	1	m	100	100
57	1	m	100	100
58	1	m	100	100
59	1	m	100	100
60	1	m	100	100
61	1	m	100	100
62	1	m	100	100
63	1	m	100	100
64	1	m	100	100
65	1	m	100	100
66	1	m	100	100
67	1	m	100	100
68	1	m	100	100
69	1	m	100	100
70	1	m	100	100
71	1	m	100	100
72	1	m	100	100
73	1	m	100	100
74	1	m	100	100
75	1	m	100	100
76	1	m	100	100
77	1	m	100	100
78	1	m	100	100
79	1	m	100	100
80	1	m	100	100
81	1	m	100	100
82	1	m	100	100
83	1	m	100	100
84	1	m	100	100
85	1	m	100	100
86	1	m	100	100
87	1	m	100	100
88	1	m	100	100
89	1	m	100	100
90	1	m	100	100
91	1	m	100	100
92	1	m	100	100
93	1	m	100	100
94	1	m	100	100
95	1	m	100	100
96	1	m	100	100
97	1	m	100	100
98	1	m	100	100
99	1	m	100	100
100	1	m	100	100



Armação positiva das lajes do pavimento Segundo Escala 1:50
 Armação negativa das lajes do pavimento Segundo Escala 1:50
 Detalhamento de punção e cisalhamento das lajes do pavimento Segundo (Nível 636) Escala 1:50

Dimensão de dobramento das barras

d (mm)	l (mm)
6,0	30,0
6,3	31,5
8,0	40,0
10,0	50,0
12,5	62,5
16,0	80,0
20,0	100,0